



**Tri Viet Agricultural Food Trading
Production Company Limited**

PRODUCTS CATALOGUE

Processed Powder Products

Processed Frozen Products

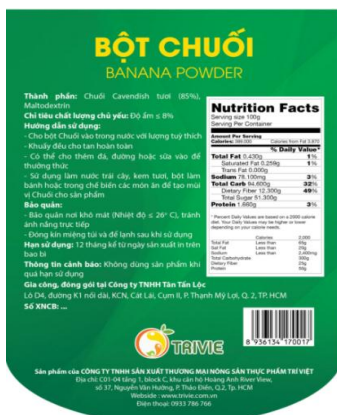
Fresh Products

Processed Dried Products

Concentrated Products

Juice Products

1. Banana Powder



Net Weight: 100gr
Expired Date: 18 months

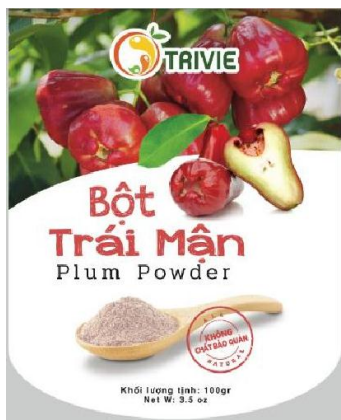
Ingredients:

- ✓ Cavendish Banana (85%), Maltodextrin (15%).
- ✓ Moisture ≤ 7%

How to Use:

- ✓ Pour proper amount of powder into the water;
- ✓ Stir well to dissolve completely;
- ✓ Ice, sugar or milk can be added;
- ✓ Used as raw materials for processing.

2. Plum Powder



Net Weight: 100gr
Expired Date: 18 months

Ingredients:

- ✓ Fresh plum (70%), Maltodextrin (30%).
- ✓ Moisture ≤ 7%

How to Use:

- ✓ Pour proper amount of powder into the water;
- ✓ Stir well to dissolve completely;
- ✓ Ice, sugar or milk can be added;
- ✓ Used as raw materials for processing.

2. Pineapple Powder



Net Weight: 100gr
Expired Date: 18 months

Ingredients:

- ✓ Pineapple (70%), Maltodextrin (25%), Glucose (5%).
- ✓ Moisture ≤ 7%

How to Use:

- ✓ Pour proper amount of powder into the water;
- ✓ Stir well to dissolve completely;
- ✓ Ice, sugar or milk can be added;
- ✓ Used as raw materials for processing.

4. Litchi Powder



Net Weight: 100gr
Expired Date: 18 months

Ingredients:

- ✓ Litchi (80%), Maltodextrin (20%).
- ✓ Moisture ≤ 7%

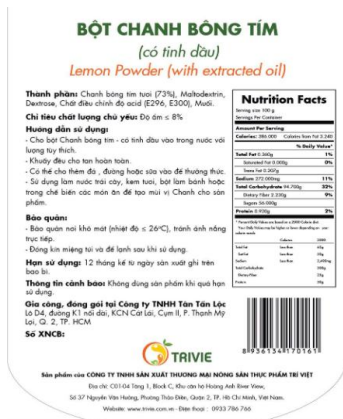
How to Use:

- ✓ Pour proper amount of powder into the water;
- ✓ Stir well to dissolve completely;
- ✓ Ice, sugar or milk can be added;
- ✓ Used as raw materials for processing.

5. Lemon Powder



Net Weight: 100gr
Expired Date: 18 months



Ingredients:

- ✓ Lemon (85%), Maltodextrin (15%).
- ✓ Moisture ≤ 7%

How to Use:

- ✓ Pour proper amount of powder into the water;
- ✓ Stir well to dissolve completely;
- ✓ Ice, sugar or milk can be added;
- ✓ Used as raw materials for processing.

6. Passion Fruit Powder



Net Weight: 100gr
Expired Date: 18 months



Ingredients:

- ✓ Passion Fruit (85%), Maltodextrin (15%).
- ✓ Moisture ≤ 7%

How to Use:

- ✓ Pour proper amount of powder into the water;
- ✓ Stir well to dissolve completely;
- ✓ Ice, sugar or milk can be added;
- ✓ Used as raw materials for processing.

7. Kumquat Powder



Net Weight: 100gr
Expired Date: 18 months

Ingredients:

- ✓ Kumquat (75%), Maltodextrin (25%).
- ✓ Moisture ≤ 7%

How to Use:

- ✓ Pour proper amount of powder into the water;
- ✓ Stir well to dissolve completely;
- ✓ Ice, sugar or milk can be added;
- ✓ Used as raw materials for processing.

8. Lime Powder



Net Weight: 100gr
Expired Date: 18 months

Ingredients:

- ✓ Lime (with extracted oil) (73%), Maltodextrin (27%).
- ✓ Moisture ≤ 7%

How to Use:

- ✓ Pour proper amount of powder into the water;
- ✓ Stir well to dissolve completely;
- ✓ Ice, sugar or milk can be added;
- ✓ Used as raw materials for processing.

9. Orange Powder



Net Weight: 100gr
Expired Date: 18 months

Ingredients:

- ✓ Orange (85%), Maltodextrin (15%).
- ✓ Moisture ≤ 7%

How to Use:

- ✓ Pour proper amount of powder into the water;
- ✓ Stir well to dissolve completely;
- ✓ Ice, sugar or milk can be added;
- ✓ Used as raw materials for processing.

10. Benincasa Powder



Net Weight: 100gr
Expired Date: 18 months

Ingredients:

- ✓ Benincasa (91%), Maltodextrin (9%).
- ✓ Moisture ≤ 7%

How to Use:

- ✓ Pour proper amount of powder into the water;
- ✓ Stir well to dissolve completely;
- ✓ Ice, sugar or milk can be added;
- ✓ Used as raw materials for processing.

11. Strawberry Powder



Net Weight: 100gr
Expired Date: 18 months

Ingredients:

- ✓ Strawberry (70%), Maltodextrin (30%).
- ✓ Moisture ≤ 7%

How to Use:

- ✓ Pour proper amount of powder into the water;
- ✓ Stir well to dissolve completely;
- ✓ Ice, sugar or milk can be added;
- ✓ Used as raw materials for processing.

12. Cantaloupe Powder



Net Weight: 100gr
Expired Date: 18 months

Ingredients:

- ✓ Cantaloupe (70%), Maltodextrin (30%).
- ✓ Moisture ≤ 7%

How to Use:

- ✓ Pour proper amount of powder into the water;
- ✓ Stir well to dissolve completely;
- ✓ Ice, sugar or milk can be added;
- ✓ Used as raw materials for processing.

13. Soursop Powder



Net Weight: 100gr
Expired Date: 18 months

Ingredients:

- ✓ Soursop (70%), Maltodextrin (30%).
- ✓ Moisture ≤ 7%

How to Use:

- ✓ Pour proper amount of powder into the water;
- ✓ Stir well to dissolve completely;
- ✓ Ice, sugar or milk can be added;
- ✓ Used as raw materials for processing.

14. Red Dragon Fruit Powder



Net Weight: 100gr
Expired Date: 18 months

Ingredients:

- ✓ Red Dragon Fruit (70%), Maltodextrin (30%).
- ✓ Moisture ≤ 7%

How to Use:

- ✓ Pour proper amount of powder into the water;
- ✓ Stir well to dissolve completely;
- ✓ Ice, sugar or milk can be added;
- ✓ Used as raw materials for processing.

15. Gac Fruit Powder



Net Weight: 100gr
Expired Date: 18 months

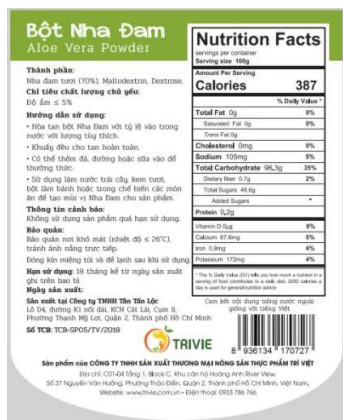
Ingredients:

- ✓ Gac Fruit (70%), Maltodextrin (30%).
- ✓ Moisture ≤ 7%

How to Use:

- ✓ Pour proper amount of powder into the water;
- ✓ Stir well to dissolve completely;
- ✓ Ice, sugar or milk can be added;
- ✓ Used as raw materials for processing.

16. Aloe Vera Powder



Net Weight: 100gr
Expired Date: 18 months

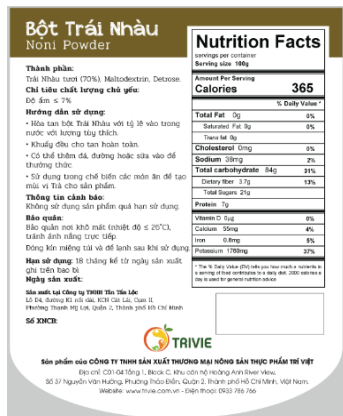
Ingredients:

- ✓ Aloe Vera (70%), Maltodextrin (30%).
- ✓ Moisture ≤ 7%

How to Use:

- ✓ Pour proper amount of powder into the water;
- ✓ Stir well to dissolve completely;
- ✓ Ice, sugar or milk can be added;
- ✓ Used as raw materials for processing.

17. Noni Powder



Net Weight: 100gr
Expired Date: 18 months

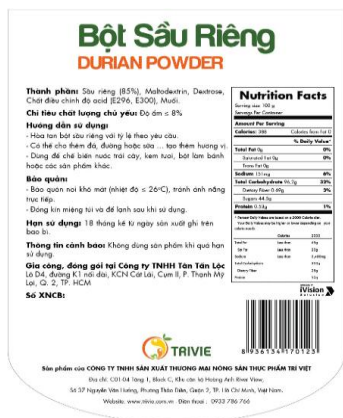
Ingredients:

- ✓ Noni (70%), Maltodextrin (30%).
- ✓ Moisture ≤ 7%

How to Use:

- ✓ Pour proper amount of powder into the water;
- ✓ Stir well to dissolve completely;
- ✓ Ice, sugar or milk can be added;
- ✓ Used as raw materials for processing.

18. Durian Powder



Net Weight: 100gr
Expired Date: 18 months

Ingredients:

- ✓ Durian (85%), Maltodextrin (15%).
- ✓ Moisture ≤ 7%

How to Use:

- ✓ Pour proper amount of powder into the water;
- ✓ Stir well to dissolve completely;
- ✓ Ice, sugar or milk can be added;
- ✓ Used as raw materials for processing.

19. Avocado Powder



Net Weight: 100gr
Expired Date: 18 months

Ingredients:

- ✓ Avocado (70%), Maltodextrin (30%).
- ✓ Moisture ≤ 7%

How to Use:

- ✓ Pour proper amount of powder into the water;
- ✓ Stir well to dissolve completely;
- ✓ Ice, sugar or milk can be added;
- ✓ Used as raw materials for processing.

20. Lucuma Powder



Net Weight: 100gr
Expired Date: 18 months

Ingredients:

- ✓ Lucuma (%), Maltodextrin (%).
- ✓ Moisture ≤ 7%

How to Use:

- ✓ Pour proper amount of powder into the water;
- ✓ Stir well to dissolve completely;
- ✓ Ice, sugar or milk can be added;
- ✓ Used as raw materials for processing.

21. Coconut Powder



Net Weight: 100gr
Expired Date: 18 months

Ingredients:

- ✓ Coconut (70%), Maltodextrin (30%).
- ✓ Moisture ≤ 7%

How to Use:

- ✓ Pour proper amount of powder into the water;
- ✓ Stir well to dissolve completely;
- ✓ Ice, sugar or milk can be added;
- ✓ Used as raw materials for processing.

22. Sapodilla Powder



Net Weight: 100gr
Expired Date: 18 months

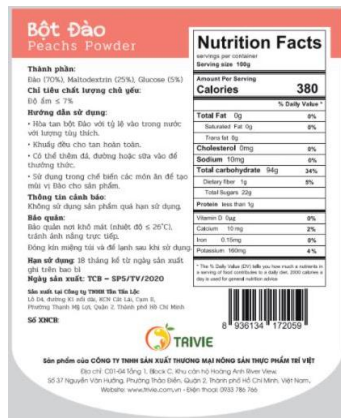
Ingredients:

- ✓ Sapodilla (%), Maltodextrin (%).
- ✓ Moisture ≤ 7%

How to Use:

- ✓ Pour proper amount of powder into the water;
- ✓ Stir well to dissolve completely;
- ✓ Ice, sugar or milk can be added;
- ✓ Used as raw materials for processing.

23. Peaches Powder



Net Weight: 100gr
Expired Date: 18 months

Ingredients:

- ✓ Peaches (70%),
Maltodextrin (25%),
Glucose (5%).
- ✓ Moisture ≤ 7%

How to Use:

- ✓ Pour proper amount of powder into the water;
- ✓ Stir well to dissolve completely;
- ✓ Ice, sugar or milk can be added;
- ✓ Used as raw materials for processing.

24. Apple Powder



Net Weight: 100gr
Expired Date: 18 months

Ingredients:

- ✓ Apple (75%),
Maltodextrin (20%),
Glucose (5%).
- ✓ Moisture ≤ 7%

How to Use:

- ✓ Pour proper amount of powder into the water;
- ✓ Stir well to dissolve completely;
- ✓ Ice, sugar or milk can be added;
- ✓ Used as raw materials for processing.

25. Strawberry Powder



Net Weight: 100gr
Expired Date: 18 months

Ingredients:

- ✓ Strawberry (70%), Maltodextrin (30%).
- ✓ Moisture ≤ 7%

How to Use:

- ✓ Pour proper amount of powder into the water;
- ✓ Stir well to dissolve completely;
- ✓ Ice, sugar or milk can be added;
- ✓ Used as raw materials for processing.

26. Raspberry Powder



Net Weight: 100gr
Expired Date: 18 months

Ingredients:

- ✓ Raspberry (75%), Maltodextrin (20%), Glucose (5%).
- ✓ Moisture ≤ 7%

How to Use:

- ✓ Pour proper amount of powder into the water;
- ✓ Stir well to dissolve completely;
- ✓ Ice, sugar or milk can be added;
- ✓ Used as raw materials for processing.

27. Blackberry Powder



Net Weight: 100gr
Expired Date: 18 months

Ingredients:

- ✓ Blackberry (75%)
- ✓ Maltodextrin (20%),
- ✓ Glucose (5%).
- ✓ Moisture ≤ 7%

How to Use:

- ✓ Pour proper amount of powder into the water;
- ✓ Stir well to dissolve completely;
- ✓ Ice, sugar or milk can be added;
- ✓ Used as raw materials for processing.

28. Kiwi Powder



Net Weight: 100gr
Expired Date: 18 months

Ingredients:

- ✓ Kiwi (75%),
- ✓ Maltodextrin (20%),
- ✓ Glucose (5%).
- ✓ Moisture ≤ 7%

How to Use:

- ✓ Pour proper amount of powder into the water;
- ✓ Stir well to dissolve completely;
- ✓ Ice, sugar or milk can be added;
- ✓ Used as raw materials for processing.

29. Blueberry Powder



Net Weight: 100gr
Expired Date: 18 months

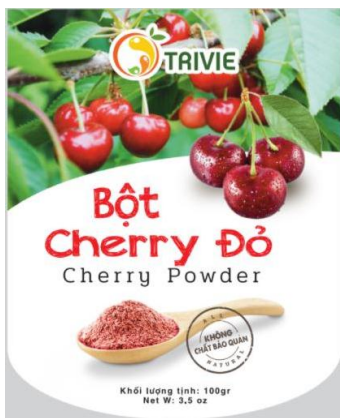
Ingredients:

- ✓ Blueberry (75%), Maltodextrin (20%), Glucose (5%).
- ✓ Moisture ≤ 7%

How to Use:

- ✓ Pour proper amount of powder into the water;
- ✓ Stir well to dissolve completely;
- ✓ Ice, sugar or milk can be added;
- ✓ Used as raw materials for processing.

30. Cherry Powder



Net Weight: 100gr
Expired Date: 18 months

Ingredients:

- ✓ Cherry (75%), Maltodextrin (20%), Glucose (5%).
- ✓ Moisture ≤ 7%

How to Use:

- ✓ Pour proper amount of powder into the water;
- ✓ Stir well to dissolve completely;
- ✓ Ice, sugar or milk can be added;
- ✓ Used as raw materials for processing.

31. Carrot Powder



Net Weight: 100gr
Expired Date: 18 months

Ingredients:

- ✓ Carrot (%) Maltodextrin (%)
- ✓ Moisture $\leq 7\%$

How to Use:

- ✓ Pour proper amount of powder into the water;
- ✓ Stir well to dissolve completely;
- ✓ Ice, sugar or milk can be added;
- ✓ Used as raw materials for processing.

32. Ginger Powder



Net Weight: 100gr
Expired Date: 18 months

Ingredients:

- ✓ Ginger (85%), Maltodextrin (15%).
- ✓ Moisture $\leq 7\%$

How to Use:

- ✓ Pour proper amount of powder into the water;
- ✓ Stir well to dissolve completely;
- ✓ Ice, sugar or milk can be added;
- ✓ Used as raw materials for processing.

33. Beetroot Powder



Net Weight: 100gr
Expired Date: 18 months

Ingredients:

- ✓ Beetroot (%)
- ✓ Maltodextrin (%)
- ✓ Moisture ≤ 7%

How to Use:

- ✓ Pour proper amount of powder into the water;
- ✓ Stir well to dissolve completely;
- ✓ Ice, sugar or milk can be added;
- ✓ Used as raw materials for processing.

34. Turmeric Powder



Net Weight: 100gr
Expired Date: 18 months

Ingredients:

- ✓ Turmeric (%)
- ✓ Maltodextrin (%)
- ✓ Moisture ≤ 7%

How to Use:

- ✓ Pour proper amount of powder into the water;
- ✓ Stir well to dissolve completely;
- ✓ Ice, sugar or milk can be added;
- ✓ Used as raw materials for processing.

35. Red Ginseng Powder



Net Weight: 100gr
Expired Date: 18 months

Ingredients:

- ✓ Red Ginseng (%), Maltodextrin (%).
- ✓ Moisture $\leq 7\%$

How to Use:

- ✓ Pour proper amount of powder into the water;
- ✓ Stir well to dissolve completely;
- ✓ Ice, sugar or milk can be added;
- ✓ Used as raw materials for processing.

36. Bo Chinh Ginseng Powder



Net Weight: 100gr
Expired Date: 18 months

Ingredients:

- ✓ Bo Chinh Ginseng (%), Maltodextrin (%).
- ✓ Moisture $\leq 7\%$

How to Use:

- ✓ Pour proper amount of powder into the water;
- ✓ Stir well to dissolve completely;
- ✓ Ice, sugar or milk can be added;
- ✓ Used as raw materials for processing.

37. Ngoc Linh Ginseng Powder



Net Weight: 100gr
Expired Date: 18 months

Ingredients:

- ✓ Ngoc Linh Ginseng (%), Maltodextrin (%).
- ✓ Moisture $\leq 7\%$

How to Use:

- ✓ Pour proper amount of powder into the water;
- ✓ Stir well to dissolve completely;
- ✓ Ice, sugar or milk can be added;
- ✓ Used as raw materials for processing.

38. Ngoc Linh Ginseng Leaf Powder



Net Weight: 100gr
Expired Date: 18 months

Ingredients:

- ✓ Ngoc Linh Ginseng Leaf (%), Maltodextrin (%).
- ✓ Moisture $\leq 7\%$

How to Use:

- ✓ Pour proper amount of powder into the water;
- ✓ Stir well to dissolve completely;
- ✓ Ice, sugar or milk can be added;
- ✓ Used as raw materials for processing.

39. Yellow Peper Powder



Net Weight: 100gr
Expired Date: 18 months

Ingredients:

- ✓ Yellow Peper (75%)
- Maltodextrin (20%),
- Glucose (5%).
- ✓ Moisture ≤ 7%

How to Use:

- ✓ Pour proper amount of powder into the water;
- ✓ Stir well to dissolve completely;
- ✓ Ice, sugar or milk can be added;
- ✓ Used as raw materials for processing.

40. Red Peper Powder



Net Weight: 100gr
Expired Date: 18 months

Ingredients:

- ✓ Red Peper (70%),
- Maltodextrin (30%).
- ✓ Moisture ≤ 7%

How to Use:

- ✓ Pour proper amount of powder into the water;
- ✓ Stir well to dissolve completely;
- ✓ Ice, sugar or milk can be added;
- ✓ Used as raw materials for processing.

41. Celery Powder



Net Weight: 100gr
Expired Date: 18 months

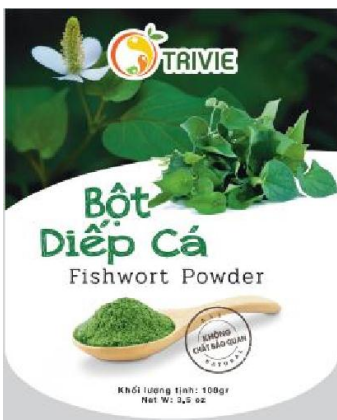
Ingredients:

- ✓ Celery (70%),
Maltodextrin (30%).
- ✓ Moisture ≤ 7%

How to Use:

- ✓ Pour proper amount of powder into the water;
- ✓ Stir well to dissolve completely;
- ✓ Ice, sugar or milk can be added;
- ✓ Used as raw materials for processing.

42. Fishwort Powder



Net Weight: 100gr
Expired Date: 18 months

Ingredients:

- ✓ Fishwort (70%),
Maltodextrin (30%).
- ✓ Moisture ≤ 7%

How to Use:

- ✓ Pour proper amount of powder into the water;
- ✓ Stir well to dissolve completely;
- ✓ Ice, sugar or milk can be added;
- ✓ Used as raw materials for processing.

43. Pennywort Powder



Net Weight: 100gr
Expired Date: 18 months

Ingredients:

- ✓ Pennywort (70%),
Maltodextrin (30%).
- ✓ Moisture ≤ 7%

How to Use:

- ✓ Pour proper amount of powder into the water;
- ✓ Stir well to dissolve completely;
- ✓ Ice, sugar or milk can be added;
- ✓ Used as raw materials for processing.

44. Kale Powder



Net Weight: 100gr
Expired Date: 18 months



Ingredients:

- ✓ Kale (70%),
Maltodextrin (30%).
- ✓ Moisture ≤ 7%

How to Use:

- ✓ Pour proper amount of powder into the water;
- ✓ Stir well to dissolve completely;
- ✓ Ice, sugar or milk can be added;
- ✓ Used as raw materials for processing.

45. Pandan Powder



Net Weight: 100gr
Expired Date: 18 months

Ingredients:

- ✓ Pandan (70%)
- Maltodextrin (30%).

- ✓ Moisture ≤ 7%

How to Use:

- ✓ Pour proper amount of powder into the water;
- ✓ Stir well to dissolve completely;
- ✓ Ice, sugar or milk can be added;
- ✓ Used as raw materials for processing.

46. Moringa Oleifera Powder



Net Weight: 100gr
Expired Date: 18 months

Ingredients:

- ✓ Moringa Oleifera (75%),
- Maltodextrin (25%).

- ✓ Moisture ≤ 7%

How to Use:

- ✓ Pour proper amount of powder into the water;
- ✓ Stir well to dissolve completely;
- ✓ Ice, sugar or milk can be added;
- ✓ Used as raw materials for processing.

47. Lotus Leaf Powder



Net Weight: 100gr
Expired Date: 18 months

Ingredients:

- ✓ Lotus Leaf, Maltodextrin.
- ✓ Moisture ≤ 7%

How to Use:

- ✓ Pour proper amount of powder into the water;
- ✓ Stir well to dissolve completely;
- ✓ Ice, sugar or milk can be added;
- ✓ Used as raw materials for processing.

48. Lotus Seeds Powder



Net Weight: 100gr
Expired Date: 18 months

Ingredients:

- ✓ Lotus Seeds (%), Maltodextrin (%).
- ✓ Moisture ≤ 7%

How to Use:

- ✓ Pour proper amount of powder into the water;
- ✓ Stir well to dissolve completely;
- ✓ Ice, sugar or milk can be added;
- ✓ Used as raw materials for processing.

49. Almond Powder



Net Weight: 100gr
Expired Date: 18 months

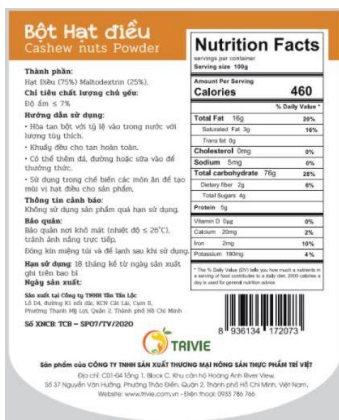
Ingredients:

- ✓ Almond, Maltodextrin.
- ✓ Moisture $\leq 7\%$

How to Use:

- ✓ Pour proper amount of powder into the water;
- ✓ Stir well to dissolve completely;
- ✓ Ice, sugar or milk can be added;
- ✓ Used as raw materials for processing.

50. Cashew Nuts Powder



Net Weight: 100gr
Expired Date: 18 months

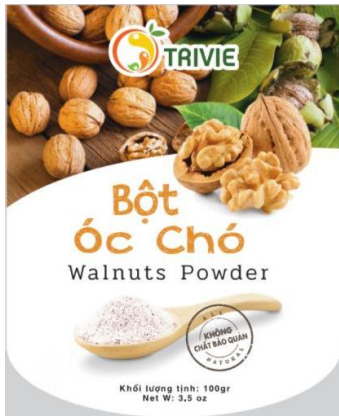
Ingredients:

- ✓ Cashew Nuts (75%), Maltodextrin (25%).
- ✓ Moisture $\leq 7\%$

How to Use:

- ✓ Pour proper amount of powder into the water;
- ✓ Stir well to dissolve completely;
- ✓ Ice, sugar or milk can be added;
- ✓ Used as raw materials for processing.

51. Walnuts Powder



Net Weight: 100gr
Expired Date: 18 months

Ingredients:

- ✓ Walnuts (75%), Maltodextrin (25%).
- ✓ Moisture ≤ 7%

How to Use:

- ✓ Pour proper amount of powder into the water;
- ✓ Stir well to dissolve completely;
- ✓ Ice, sugar or milk can be added;
- ✓ Used as raw materials for processing.

52. Green Tea Powder



Net Weight: 100gr
Expired Date: 18 months

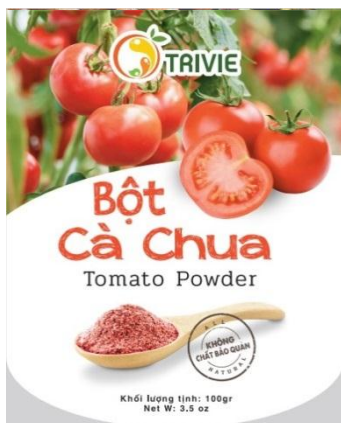
Ingredients:

- ✓ Green Tea (70%), Maltodextrin (30%).
- ✓ Moisture ≤ 7%

How to Use:

- ✓ Pour proper amount of powder into the water;
- ✓ Stir well to dissolve completely;
- ✓ Ice, sugar or milk can be added;
- ✓ Used as raw materials for processing.

53. Tomato Powder



Net Weight: 100gr
Expired Date: 18 months

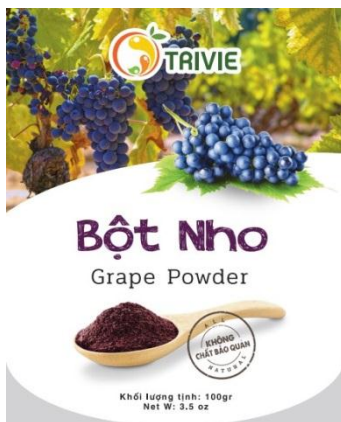
Ingredients:

- ✓ Tomato (85%), Maltodextrin (15%).
- ✓ Moisture $\leq 7\%$

How to Use:

- ✓ Pour proper amount of powder into the water;
- ✓ Stir well to dissolve completely;
- ✓ Ice, sugar or milk can be added;
- ✓ Used as raw materials for processing.

54. Grape Powder



Net Weight: 100gr
Expired Date: 18 months

Ingredients:

- ✓ Grape (95%), Maltodextrin (5%).
- ✓ Moisture $\leq 7\%$

How to Use:

- ✓ Pour proper amount of powder into the water;
- ✓ Stir well to dissolve completely;
- ✓ Ice, sugar or milk can be added;
- ✓ Used as raw materials for processing.

55. Pomegranate Powder



Net Weight: 100gr
Expired Date: 18 months

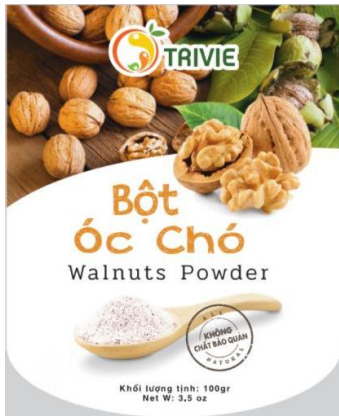
Ingredients:

- ✓ Pomegranate (58%), Maltodextrin (42%).
- ✓ Moisture ≤ 7%

How to Use:

- ✓ Pour proper amount of powder into the water;
- ✓ Stir well to dissolve completely;
- ✓ Ice, sugar or milk can be added;
- ✓ Used as raw materials for processing.

56. Walnuts Powder



Net Weight: 100gr
Expired Date: 18 months

Ingredients:

- ✓ Walnut (75%), Maltodextrin (25%).
- ✓ Moisture $\leq 7\%$

How to Use:

- ✓ Pour proper amount of powder into the water;
- ✓ Stir well to dissolve
- ✓ Ice, sugar or milk can be added;
- ✓ Used as raw materials for processing.

57. Dried Dragon Fruit



Net Weight : 250gr
Expired Date: 18 months

Ingredients:

- ✓ Red Dragon Fruit (99%), Vegetable oil (1%).
- ✓ Moisture $\leq 3\%$

How to use:

- ✓ Able to consume without processing
- ✓ Once opened, please store in dry and cool place
- ✓ Keet airtight when using

62. Dried sliced ginger



Net Weight: 250gr
Expired Date: 18 months

Ingredients:

- ✓ Ginger (99%), Dầu Vegetable oil (1%).
- ✓ Moisture $\leq 3\%$

How to use:

- ✓ Raw materials for food producing factories.

63. Bitter gourd (Bitter Melon) sliced and dried



Net Weight: 250gr
Expired Date: 18 months

Ingredients :

- ✓ Bitter Melon (99%), Vegetable oil (1%).
- ✓ Moisture $\leq 3\%$

How to use:

- ✓ Raw materials for food producing factories

64. Dried Jackfruit



Ingredients:

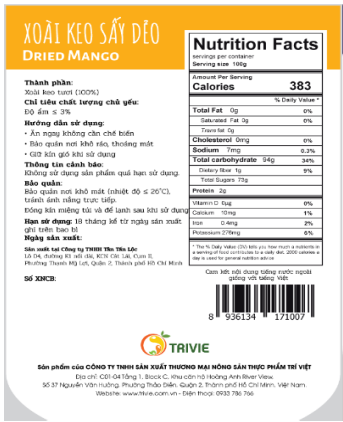
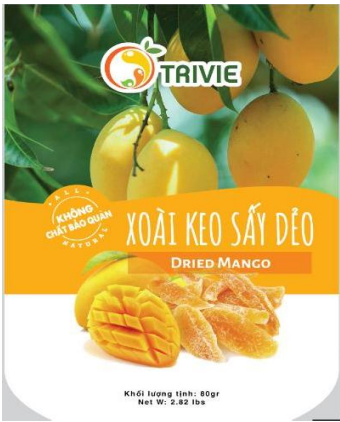
- ✓ Jackfruit (99%), Vegetable oil (1%).
- ✓ Moisture ≤ 3%

How to use:

- ✓ Able to consume without processing
- ✓ Once opened, please store in dry and cool place
- ✓ Keep airtight when using

Net Weight: 250gr
Expired Date: 18 months

65. Dried Mango



Ingredients:

- ✓ Fresh Mango (100%).
- ✓ Moisture ≤ 3%

How to use:

- ✓ Able to consume without processing
- ✓ Once opened, please store in dry and cool place
- ✓ Keep airtight when using

Net Weight: 250gr
Expired Date: 18 months

66. Soft Dried Calamondin



Net Weight: 250gr
Expired Date: 18 months

Ingredients:

- ✓ Calamondin (99%), Vegetable oil (1%).
- ✓ Moisture ≤ 3%

How to use:

- ✓ Able to consume without processing
- ✓ Once opened, please store in dry and cool place
- ✓ Keep airtight when using

67. Soft Dried Lime



Net Weight: 250gr
Expired Date: 18 months

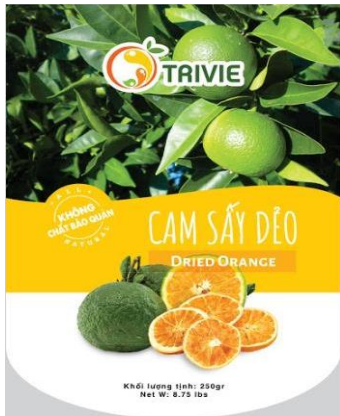
Ingredients:

- ✓ Lime (99%), Vegetable oil (1%).
- ✓ Moisture ≤ 3%

How to use:

- ✓ Able to consume without processing
- ✓ Once opened, please store in dry and cool place
- ✓ Keep airtight when using

68. Dried Orange



Ingredients:

- ✓ Orange (99%), Vegetable oil (1%).
- ✓ Moisture ≤ 3%

How to use:

- ✓ Able to consume without processing
- ✓ Once opened, please store in dry and cool place
- ✓ Keep airtight when using

Net Weight: 250gr
Expired Date: 18 months

69. Soft Dried Tangerine



Ingredients:

- ✓ Tangerine (99%), Vegetable oil (1%).
- ✓ Moisture ≤ 3%

How to use:

- ✓ Able to consume without processing
- ✓ Once opened, please store in dry and cool place
- ✓ Keep airtight when using

Net Weight: 250gr
Expired Date: 18 months

70. Dried Annona



Net Weight: 250gr
Expired Date: 18 months

Ingredients:

- ✓ Annona (100%),
Moisture \leq 3%

How to use:

- ✓ Able to consume without processing
- ✓ Once opened, please store in dry and cool place
- ✓ Keep airtight when using

71. Dried Vera



Net Weight: 250gr
Expired Date: 18 months

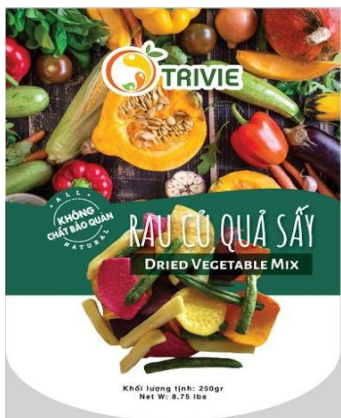
Ingredients:

- ✓ Vera (100%), Moisture \leq 3%

How to use:

- ✓ Able to consume without processing
- ✓ Once opened, please store in dry and cool place
- ✓ Keep airtight when using

72. Dried Vegetable Mix



Net Weight: 250gr
Expired Date: 18 months

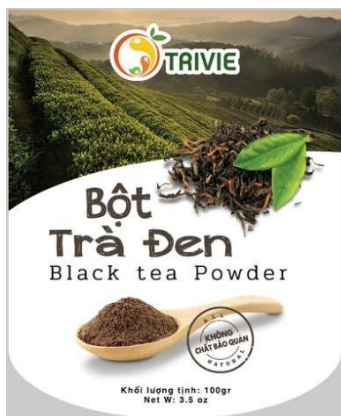
Ingredients:

- ✓ Vegetable (99%),
Vegetable oil (1%0.
- ✓ Moisture ≤ 3%

How to use:

- ✓ Able to consume
without processing
- ✓ Once opened, please
store in dry and cool
place
- ✓ Keep airtight when
using

73. Black Tea Powder



Net Weight: 100gr
Expired Date: 18 months

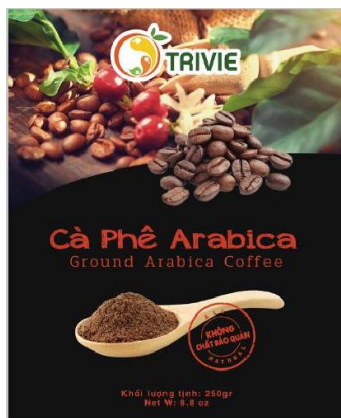
Ingredients:

- ✓ Black Tea (70%), Maltodextrin (30%).
- ✓ Moisture ≤ 7%

How to Use:

- ✓ Pour proper amount of powder into the water;
- ✓ Stir well to dissolve completely;
- ✓ Ice, sugar or milk can be added;
- ✓ Used as raw materials for processing.

74. Ground Arabica Coffee Powder



Net Weight: 100gr
Expired Date: 18 months

Ingredients:

- ✓ Arabica Coffee (100%), Synthetic Coffee flavor, none of others additives used.

How to Use:

- ✓ Pour 20 gram coffee powder and 20 ml boiling water into the filter to allow the coffee to penetrate evenly;
- ✓ Pour 50 ml boiling water into the filter and wait for coffee to drip to glass;
- ✓ Ice, sugar or milk can be added.

75. Ground Espresso Coffee Powder



Net Weight: 100gr
Expired Date: 18 months

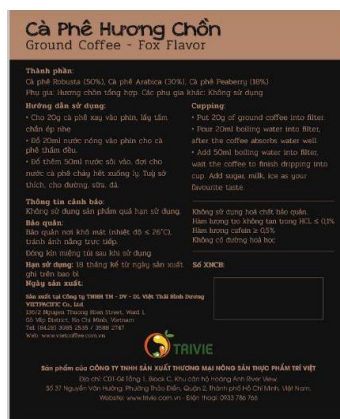
Ingredients:

- ✓ Robusta Coffee (60%),
- Arabica Coffee (40%)
- Synthetic Coffee flavor,
- none of others additives used.

How to Use:

- ✓ Pour 20 gram coffee powder and 20 ml boiling water into the filter to allow the coffee to penetrate evenly;
- ✓ Pour 50 ml boiling water into the filter and wait for coffee to drip to glass;
- ✓ Ice, sugar or milk can be added.

76. Ground Coffee – Fox Flavor Powder



Net Weight: 100gr
Expired Date: 18 months

Ingredients:

- ✓ Robusta coffee (50%),
- Arabica coffee (30%),
- Peaberry coffee (18%)
- Synthetic Coffee flavor,
- none of others additives used.

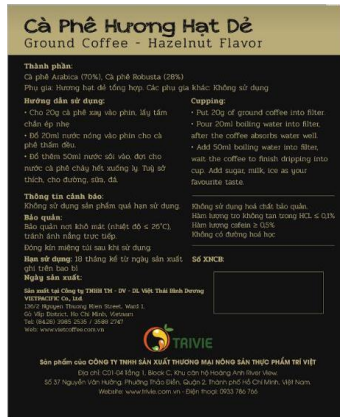
How to Use:

- ✓ Pour 20 gram coffee powder and 20 ml boiling water into the filter to allow the coffee to penetrate evenly;
- ✓ Pour 50 ml boiling water into the filter and wait for coffee to drip to glass;
- ✓ Ice, sugar or milk can be added.

77. Ground Coffee Hazelnut Flavor Powder



Net Weight: 100gr
Expired Date: 18 months



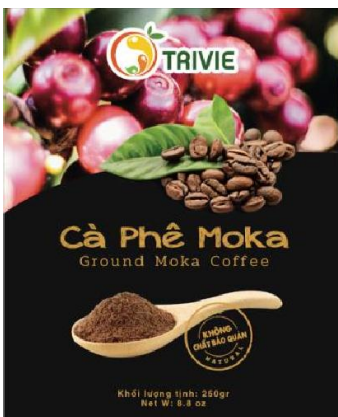
Ingredients:

- ✓ Robusta Coffee (28%), Arabica Coffee (70%)
- Synthetic Coffee flavor, none of others additives used.

How to Use:

- ✓ Pour 20 gram coffee powder and 20 ml boiling water into the filter to allow the coffee to penetrate evenly;
- ✓ Pour 50 ml boiling water into the filter and wait for coffee to drip to glass;
- ✓ Ice, sugar or milk can be added.

78. Ground Moka Coffee Powder



Net Weight: 100gr
Expired Date: 18 months



Ingredients:

- ✓ Robusta Coffee (40%), Arabica Coffee (48%), Peaberry Coffee (10%)
- Synthetic Coffee flavor, none of others additives used.

How to Use:

- ✓ Pour 20 gram coffee powder and 20 ml boiling water into the filter to allow the coffee to penetrate evenly;
- ✓ Pour 50 ml boiling water into the filter and wait for coffee to drip to glass;
- ✓ Ice, sugar or milk can be added.

79. Saigon Expresso – Coffee Beans Saigon Expresso



Net Weight: 100gr
Expired Date: 18 months



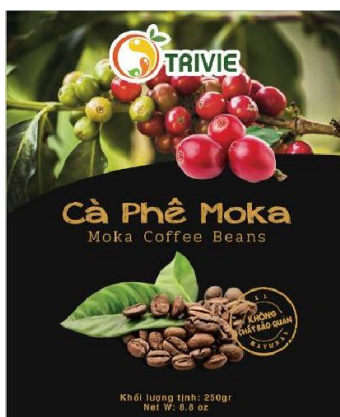
Ingredients:

- ✓ Robusta Coffee (60%),
- Arabica Coffee (40%)
- Synthetic Coffee flavor,
- none of others additives used.

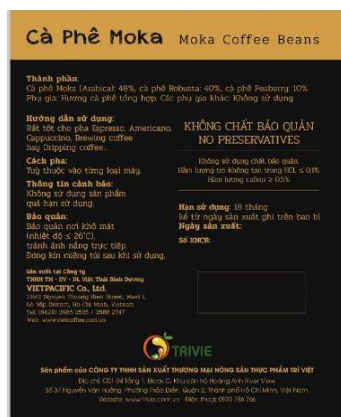
How to Use:

- ✓ Pour 20 gram coffee powder and 20 ml boiling water into the filter to allow the coffee to penetrate evenly;
- ✓ Pour 50 ml boiling water into the filter and wait for coffee to drip to glass;
- ✓ Ice, sugar or milk can be added.

80. Moka Coffee Beans



Net Weight: 100gr
Expired Date: 18 months



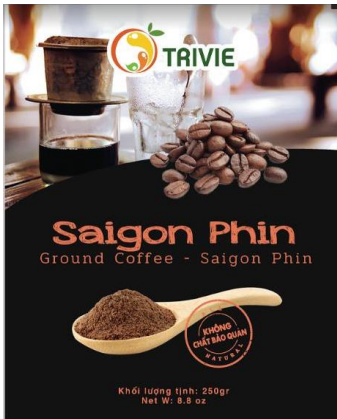
Ingredients:

- ✓ Robusta Coffee (40%),
- Arabica Coffee (48%),
- Peaberry Coffee (10%)
- Synthetic Coffee flavor,
- none of others additives used.

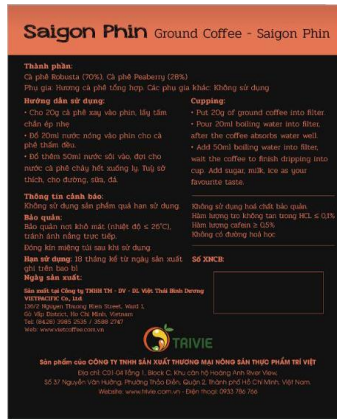
How to Use:

- ✓ Pour 20 gram coffee powder and 20 ml boiling water into the filter to allow the coffee to penetrate evenly;
- ✓ Pour 50 ml boiling water into the filter and wait for coffee to drip to glass;
- ✓ Ice, sugar or milk can be added.

81. Coffee Beans Saigon Espresso Powder



Net Weight: 100gr
Expired Date: 18 months



Ingredients:

- ✓ Robusta Coffee (70%),
- Peaberry Coffee (28%)
- Synthetic Coffee flavor,
- none of others additives used.

How to Use:

- ✓ Pour 20 gram coffee powder and 20 ml boiling water into the filter to allow the coffee to penetrate evenly;
- ✓ Pour 50 ml boiling water into the filter and wait for coffee to drip to glass;
- ✓ Ice, sugar or milk can be added.

82. Dried Sweet Potato



Net Weight: 100gr
Expired Date: 18 months



Ingredients:

- ✓ Fresh sweet potato (99%),
- Vegetable Oil (1%).
- ✓ Moisture ≤ 3%

How to Use:

- ✓ Able to consume without processing,
- ✓ Once opened, please store in dry and cool place.,
- ✓ Keep airtight when using.

83. Soft Dried Orange



Net Weight: 100gr
Expired Date: 18 months

Ingredients:

- ✓ Fresh jumbo Orange (99%), Vegetable Oil (1%).
- ✓ Moisture ≤ 3%

How to Use:

- ✓ Pour proper amount of powder into the water;
- ✓ Stir well to dissolve completely;
- ✓ Ice, sugar or milk can be added;
- ✓ Used as raw materials for processing.

84. Purple lemon & Limka Syrup



Net Weight: 100gr
Expired Date: 18 months

Ingredients:

- ✓ Fresh lemon (100%),

How to Use:

- ✓ Raw materials for food producing factories,
- ✓ Materials in juice and bakery or ice cream industry...

85. Frozen Kumquat Syrup



Net Weight: 5 Kg
Expired Date: 18 months

Ingredients:

- ✓ Fresh Kumquat (100%)

How to Use:

- ✓ Raw materials for food producing factories
- ✓ Materials in bakery or ice cream industry...

86. Concentrated Orange Syrup



Ingredients:

- ✓ Jumbo Orange (100%),

How to Use:

- ✓ Raw materials for food producing factories,
- ✓ Materials in juice and bakery or ice cream industry
- ...

87. Frozen Grape Syrup



Net Weight : 5 Kg
Expired Date: 18 months

Ingredients:

- ✓ Pasteurized grapes (100%)

How to use:

- ✓ Raw materials for food producing factories
- ✓ Materials in bakery or ice cream industry ...

88. Frozen Pineapple Syrup



Net Weight : 5 Kg
Expired Date: 18 months

Ingredients:

- ✓ Pasteurized Pineapple (100%),

How to use:

- ✓ Raw materials for food producing factories
- ✓ Materials in bakery or ice cream industry ...

89. Frozen Zucchini Syrup



Net Weight : 5 Kg
Expired Date: 18 months

Ingredients:

- ✓ Pasteurized Zucchini (100%)

How to use:

- ✓ Raw materials for food producing factories
- ✓ Materials in bakery or ice cream industry ...

90. Frozen Passion Fruit Syrup



Net Weight : 5 Kg
Expired Date: 18 months

Ingredients:

- ✓ Pasteurized Passion Fruit (100%)

How to use:

- ✓ Raw materials for food producing factories
- ✓ Materials in bakery or ice cream industry ...

91. Frozen Pomegranate Syrup



Ingredients:

- ✓ Pasteurized Pomegranate 100%)

How to use:

- ✓ Raw materials for food producing factories
- ✓ Materials in bakery or ice cream industry ...

Net Weight : 5 Kg
Expired Date: 18 months

92. Frozen Sliced Annona



Ingredients:

- ✓ Annona(100%)

How to use:

- ✓ Raw materials for food producing factories
- ✓ Fully eligible for export

Net Weight : 5 Kg
Expired Date: 18 months

93. Frozen Sliced Mango



Net Weight : 5 Kg
Expired Date: 18 months

Ingredients:

- ✓ Mango (100%)

How to use:

- ✓ Raw materials for food producing factories
- ✓ Fully eligible for export

94. Frozen Sliced Gac Fruit



Net Weight : 5 Kg
Expired Date: 18 months

Ingredients:

- ✓ Gac Fruit (100%)

How to use:

- ✓ Raw materials for food producing factories
- ✓ Fully eligible for export

95. Frozen Sliced Cherry



Ingredients:

- ✓ Cherry (100%)

How to use:

- ✓ Raw materials for food producing factories
- ✓ Fully eligible for export

Net Weight : 5 Kg
Expired Date: 18 months

96. Frozen Sliced Kiwi



Ingredients:

- ✓ Kiwi (100%),

How to use:

- ✓ Raw materials for food producing factories
- ✓ Fully eligible for export

Net Weight : 5 Kg
Expired Date: 18 months

97. Frozen Sliced Red Raspberry



Ingredients:

- ✓ Raspberry (100%)

How to use:

- ✓ Raw materials for food producing factories
- ✓ Fully eligible for export

Net Weight : 5 Kg
Expired Date: 18 months

98. Frozen Sliced Black Raspberry



Ingredients:

- ✓ Black Raspberry (100%)

How to use:

- ✓ Raw materials for food producing factories
- ✓ Fully eligible for export

Net Weight : 5 Kg
Expired Date: 18 months

99. Frozen Sliced Peach



Ingredients:

Peach (100%)

How to use:

- ✓ Raw materials for food producing factories
- ✓ Fully eligible for export

Net Weight : 5 Kg

Expired Date: 18 months

100. Frozen Sliced Banana



Ingredients

Banana (100%)

How to use:

- ✓ Raw materials for food producing factories
- ✓ Fully eligible for export

Net Weight : 5 Kg

Expired Date: 18 months

101. Frozen Sliced Red Dragon Fruit



Ingredients:

- ✓ Red Dragon Fruit (100%)

How to use:

- ✓ Raw materials for food producing factories
- ✓ Fully eligible for export

Net Weight : 5 Kg

Expired Date: 18 months

102. Frozen Sliced Strawberry



Ingredients:

- ✓ Strawberry (100%)

How to use:

- ✓ Raw materials for food producing factories
- ✓ Fully eligible for export

Net Weight : 5 Kg

Expired Date: 18 months

103. Frozen Green Pumpkin and Concentrated Juice



Ingredients:

- ✓ Green Pumpkin (100%),

How to use:

- ✓ Raw materials for food producing factories
- ✓ Fully eligible for export

Net Weight : 5 Kg
Expired Date: 18 months

104. Durian Frozen



Expired Date: 18 months

Ingredients:

- ✓ Durian (100%)

How to Use:

- ✓ Raw materials for food producing factories
- ✓ Material for Bakery and Ice cream industry...

105. Durian Frozen Flesh/Aril



Expired Date: 18 months

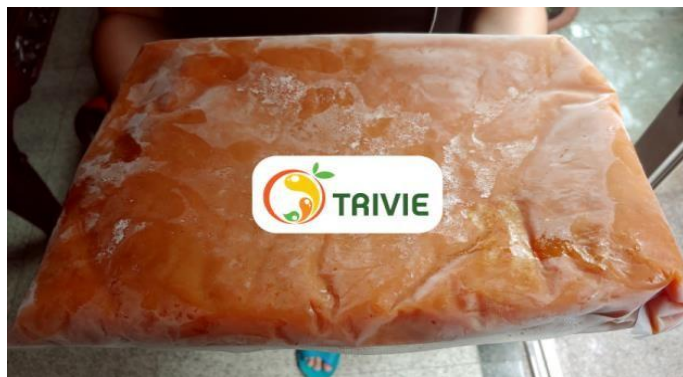
Ingredients:

- ✓ Durian (100%),

How to Use:

- ✓ Raw materials for food producing factories.
- ✓ Fully eligible for export.

106. Passion fruit Concentrate– Brix 50



Net Weight: 5 Kg
Expired Date: 18 months

Ingredients:

- ✓ Fresh Passion fruit (100%).

How to Use:

- ✓ Raw materials for food and juice producing factory
- ✓ Materials in juice and bakery or ice cream industry...

107. Frozen Passion fruit syrup



Ingredients:

- ✓ Chanh dây tươi (100%),

How to Use:

- ✓ Raw materials for food producing factories,
- ✓ Materials in juice and bakery or ice cream industry...

108. Limca Lemon



Expired Date: 18 months

Ingredients:

- ✓ Fresh Lemon (100%)

How to Use:

- ✓ Raw materials for food producing factories
- ✓ Fully eligible for export

109. Cavendish Banana



Ingredients:

- ✓ Fresh Cavendish Banana (100%),

How to Use:

- ✓ Raw materials for food producing factories.
- ✓ Fully eligible for export.

110. Cat Chu Mango



Ingredients:

- ✓ Cat Chu Mango(100%)

How to Use:

- ✓ Raw materials for food processing factories,
- ✓ Fully eligible for export

Expired Date: 18 months

Tri Viet Agricultural Food Trading Production Company Limited

Headquarter:

Address: No. 37 Nguyen Van Huong St., Thao Dien Ward, Dist. 02, Ho Chi Minh, Vietnam

SĐT: +84 (0) 963 875 633

Email: tri.nguyen@trivie.com.vn

Representative Office:

Address: No. 3, B15, New My Dinh 1 Urban Area, Cau Dien Ward, Nam Tu Liem Dist., Ha Noi City, Vietnam

SĐT: +84 (0) 983 017 898

Email: triviehanoi@trivie.com.vn