




Garment/Apparel

Made in Vietnam

## Contact us

771 Kinh Duong Vuong, An Lac, Binh Tan  
Ho Chi Minh city, Vietnam

+84 938 932 527     

+84 707 642 630 

henry.dang@htradexim.com



Moc Think Phat  
Manufacturing JSC.,



OEM-FOB

# About us

## Brief

Having 2 factories in Ho Chi Minh city and Binh Duong province

Total area of 6,000 sqm

Nearly 130 employees

Over 6 years of experience

Capacity of 50,000 pcs/month

## Market

EU, USA, Japan, Korea

## Experience

T-shirt

Poloshirt

Shirt

Jacket

Jeans

Backpack (Trading)



*Sewing - Section A*



*Sewing - Section B*



*Cutting - Section A*



*Cutting - Section B*



*Packaging*



*Packaged*

Tech Design Stage

FMA 2021 - Mens - 22 Mens Knits

**Description** LUX PIQUE HD X POLO  
W:SELF COLLAR SS

**Mat One ID#**

**Mat One Desc**

**Mat One Content**

**Wash/Fin**

**Weight/Width**

**End/Yarn Count**

**Gauge**

**Created By** Kevin Jaedon

**Created Date** 10/15/2020

**Modified By** Kevin Jaedon

**Modified Date** 1/12/2021



Material Description	Material Image	Supplier	Quality/Supplier #	Qty	Size	Placement	Casual New Olive-Fall Sage	MGH Jaspe Heather BAB074	Red Wine-Harvard Red	Charcoal Jaspe Heather B1NE06
MK02158W Luxe Pique		Li Fung India - Eastman		0.00	Solid	Ⓢ BODY; Ⓢ SLEEVES; Ⓢ FLACKET; Ⓢ COLLAR STAND; Ⓢ COLLAR	Casual New Olive-Fall Sage	MGH Jaspe Heather BAB074 FALL 2021	Red Wine-Harvard Red SUMMER 21	Charcoal Jaspe Heather B1NE06 FALL 2021
GRAPHIC GRAPHIC				0.00		Ⓢ WEARER'S LEFT CHEST	See Graphic at the Colorway DTM CASUAL NEW OLIVE	See Graphic at the Colorway DTM MGH Jaspe Heather BAB074	See Graphic at the Colorway DTM HARVARD RED	See Graphic at the Colorway DTM Charcoal Jaspe Heather B1NE06
ETT00027 Circular Knit Interlining		Approved Vendors Only	Can use PCC, Vilene	0.00		Ⓢ COLLAR	color compatible w/ self	color compatible w/ self	color compatible w/ self	color compatible w/ self
ETT00270 Woven Interlining		Approved Vendors Only	Can Order PCC Or Vilene	0.00		Ⓢ FLACKET Ⓢ COLLAR STAND	Compatible self	Compatible self	Compatible self	Compatible self
T03478 Libri SD		Emsig		3.00	18L	1 Ⓢ Collar Stand 2 Ⓢ CF placket	Olive Pearl TT2736	TT1188 (mills) Dark Smoke	RED WINE 22 -16-17	TT1188 (mills) Dark Smoke
EXP602 Poly wrapped Poly core		Approved Vendors Only	Perma Core, Epic or Nukor	0.00	Tex 30	ALL STITCHING	DTM AREA SEWN	DTM AREA SEWN	DTM AREA SEWN	DTM AREA SEWN
EXP602 Poly wrapped Poly core		Approved Vendors Only	Perma Core, Epic or Nukor	0.00	Tex 24	BUTTON X STITCH	DTM TO BUTTON	DTM TO BUTTON	DTM TO BUTTON	DTM TO BUTTON
EX533 Express		Avery		1.00		See label placement	Black w/white	Black w/white	Black w/white	Black w/white

## Masterfile detail sketches

<b>Jake*s</b> collection	season	1	2019	market	14951	short desc EN	Glitter Check B	style no		article	14960102845
	product	601	D-BLAZER		composition	68% PES, 30% CV, 2% EL		handover date	02.09.2018		
block name		JW50-26Josephine0618-A				body shape:		quantity cluster code <input type="checkbox"/>			
SB	Roman Hosek	DES	Maja Pack		TPM	Hanh Ait Hmida-Huynh		Workflow type Brand Ex Asia Sea short sample Process			

[edit picture](#)

### FRONT:

- double-breasted blazer
- collar and pointed lapel
- 2 functional buttons
- 4 non-functional buttons with counter buttons
- shaped dividing seam from armhole into hem
- straight bust dart
- piped flap pocket
- blind hem

### BACK:

- length: 69cm
- CB dividing seam with hidden slit
- pocket visible at back
- curved dividing seam from armhole into hem
- sleeve with sleeve dividing seam and 3 touching buttons

### LINING:

- fully lined
- movement pleat
- halfmoon with piping and columbia stitch

Fit Corrections-PPPICS

Pacific Sunwear of California FEB1	Style Number	860BT200414	Season	BYS 2020
WOMENS	Parent Style			
W BOTTOMS			Technical Designer	
W DENIM			Date Folder Modified	19 JUN 2020 08:14 AM
	Base Fabric			

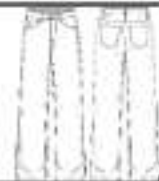


Image Name: 8860BT200414 90S BF OVERNIGHT GRAY-PP

**FOR THIS STYLE: KNEE DESTRUCTION IS MEASURED:  
CROTCH SEAM TO TOP OF DESTRUCTION**

**ADD 1/4" to knee spec  
To avoid curved seams**

**PRE-PRODUCTION SAMPLE**

Specimen:  PPJ  PPJ/A TRNG

Origin:  8860BT200414-PPJ - OVERNIGHT GREY

Production Start Date: 12-10-20

Order Quantity: 1000

Material: 87-801218

Notes:






*Henry Dang*  
Director

771 Kinh Duong Vuong, An Lac, Binh Tan  
Ho Chi Minh city, Vietnam

+84 938 932 527     

+84 707 642 630 

henry.dang@htradexim.com

*Photos & Videos*

  
<https://bit.ly/moethinhphat>