



TAMADA ENGINEERING & TRADING COMPANY
CÔNG TY KỸ THUẬT VÀ THƯƠNG MẠI TAMADA

DESIGN & BUILT OF MECHANICAL, ELECTRICAL AND AUTOMATION SYSTEM

BUILT-OPERATION-TRANSFER ENVIRONMENT PROJECTS (WATER & WASTE)



COMPANY PROFILE

HỒ SƠ GIỚI THIỆU CÔNG TY

Vietnam Office:

No.19, road 43, Nguyen Hoang street, An Phu ward, Thu Duc City, Ho Chi Minh City, Vietnam

Singapore Office:

11 Beach Road, #03-39 Crasco Building, Singapore 189675

Myanmar Office:

621 Kanaung Min Thar Gyi Street, (Thilawa Local Zone), Kyauktan Township, Yangon City, The Union of Myanmar

Madagascar Office:

S100 - Carreau 10, Cité Vohitsara, Dépôt Analakininina, Tamatave, Madagascar

Your trustworthy partner

❖ Top Message



Tamada Engineering and Trading Co Ltd (Tamada) was established in 2014 in Yangon, our shareholder with Vietnam, Japan shares for strategic purpose of extension of market share and business diversification in ASEAN Countries (Vietnam, Myanmar, Laos, Cambodia, Thailand...), also the Head Office in Ho Chi Minh City, Vietnam with Japan's FDI Projects and we have 02 offices in Singapore and Myanmar. With experience working in Vietnam, Laos and Myanmar for FDI project with Japanese, European and Asia client, from a solid base with experience professional personnel and an effective management system, Tamada had been continuously improving its standing in the market on the ground.

We are, **Tamada Engineering & Trading Co Ltd.**, always try to understand client's exact requirement and examine whether it is adequate and cost effective or not. We do not try to sell our product without benefiting our client and increasing their profit, because we know we cannot survive unless our client makes a good profits.

With our capacity, we can do and services with Design-Built, Bid-Built, Design-Bid-Built in foreign direct investment (F.D.I) as well as other investors, several of them being repeat customers, in several field of Mechanical and Electrical works:

1. Commercial (Offices, Shopping Mall, Supermarket).
2. Residential & Hospitality (Hotels, Hospital and Apartment).
3. Industrials (Production Factories, Breweries, Warehouse, Rental Factory).
4. Educational (Schools).
5. Infrastructure and other (Industrial Park, Airport, Terminal Port...).

We also give strong support to our clients including educating their staff in the basic plant equipment operating and maintenance aspects so that the plant becomes very friendly to its users. Our Maintenance & Services team will be take care with our customer and client in operation time to support and upgrade (if need) the M&E system.

We continuously look into raising the quality and lowering the cost of production. We are sure that our advanced technologies and our reliable execution control satisfy all clients.

Thank you very much for your kind attention.

Your Faithfully;

Mr. NGUYEN HONG SON
Chairman.

❖ Company History



- August 2014: Open TAMADA Engineering & Services Company in Yangon.
- December 2014: Start the First Project in Thilawa SEZ, Yangon City.
- February 2016: Move office to new address in Yangon, 52B Aung Chan Thar Housing, Thanlyin Township, Yangon City
- July 2017: Open Singapore Branch at 11 Beach Road, Singapore.
- April 2018: Open Vietnam Office in Ho Chi Minh City at 19 Road 43, Nguyen Hoang street, An Phu ward, Thu Duc City, HCMC.
- May 2018: Investment the First Factory in Yangon to Cooperation with Local Company for Hot Dip Galvanizing Factory (Capacity: 60.000 ton/year)
- January 2019: Build the Myanmar Office in Thilawa SEZ, Yangon, Myanmar.
- March 2020: Hanoi Office - 2 Floor VMQ Building, 87 Nguyen Thai Hoc , Ha Noi
- July 2020: Get ISO 9001-2015, ISO 14001-2015, ISO 45001-2018 Certificate.
- Nov 2021: Madagascar Office in Toamasina City, Madagascar (Africa)



TAMADA - Myanmar Office



TAMADA - Singapore Office



TAMADA - Vietnam Office

◆ Company Profiles

Name: TAMADA ENGINEERING AND SERVICES COMPANY

Established: August – 2014 .

Myanmar Office: 621 Kanaung Min Thar Gyi Street, (Thilawa Local Zone), Kyauktan Township, Yangon City, The Union of Myanmar.

Singapore Office: 11 Beach Road, #03-39 Crasco Building, Singapore 189675.

Madagascar Office: S100 - Carreau 10, Cité Vohitsara, Dépôt Analakininina, Tamatave, Madagascar

Vietnam Office: 19 Road 43, Nguyen Hoang Street, An Phu ward, Thu Duc City, Ho Chi Minh City, Vietnam.

Chairman: Nguyen Hong Son.

Marketing Director: Kenichi Udagawa.

Employees: 180 peoples.

Business Activities:

1. Mechanical and Electrical:

- Design & Built and Consultancy for M&E works.
- 3D BIM engineering drawing as per client's requirement.
- HVAC system & Clean Room system.
- HV Incoming, LV Electrical system, Backup Generator, UPS system.
- Lighting Fixtures, Outlet Socket, External Lighting.
- TEL & LAN, Public Address, CCTV, Assess Control, Clock Alarm, BMS Management, Automation system.
- Plumbing system (Water supply, Sewage, Sanitary).
- Fire Protection (Fire Alarm, Fire Hydrant, Sprinkler...)
- Utility design, supply & commissioning (Compressed air, deionized water, water treatment, and process piping)
- Automation and BMS system.

2. Maintenance & Services works

- Maintenance, services and upgrade for M&E works.

3. Trading work

- Trading all equipment and Materials for M&E works.

4. Investment

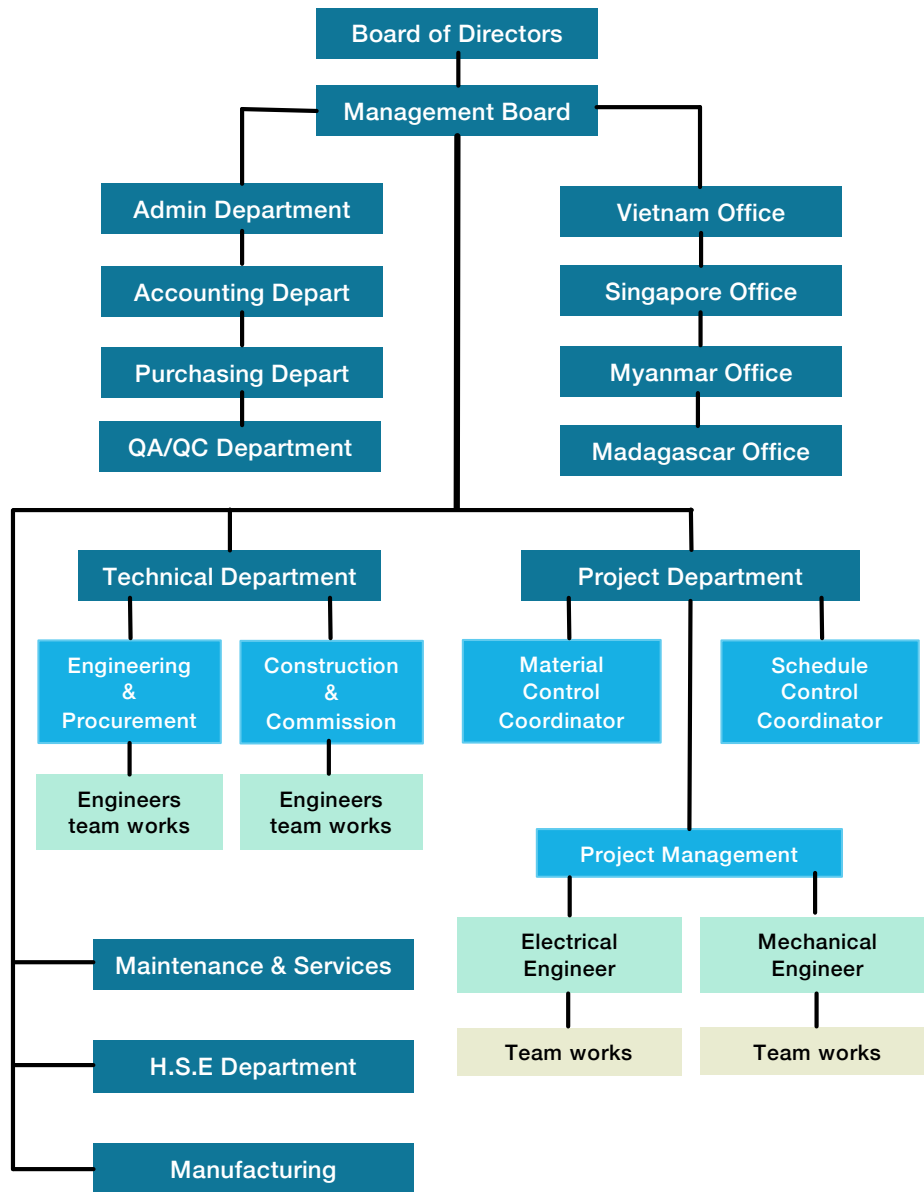
- Investment Waster Supply, Sewage Water Treatment, Urban Waste Treatment.
- Investment small Factories for Supporting Industrial.



◆ Company Policy



Company Organization Chart



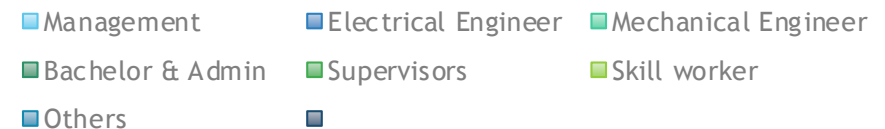
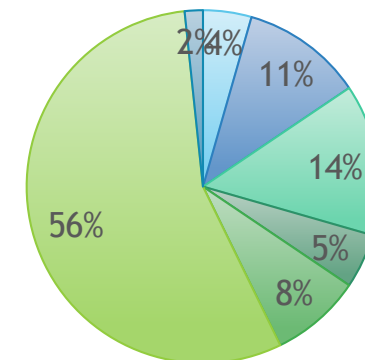
Human Resources



Manpower:

Total manpower:	180 peoples
Management	08 peoples
Electrical Engineer	25 peoples
Mechanical Engineer	30 peoples
Bachelor & Admin	09 peoples
Supervisors	15 peoples
Skill worker	100 peoples
Others	03 peoples

Total Manpower



SCOPE OF BUSINESS

FOR MECHANICAL AND ELECTRICAL WORK



Industrial



Infrastructure



Residential & Commercial

Your trustworthy partner

❖ Business Activities | Electrical works

Medium Voltage:

- Incoming MV, Power Sub-Station, Power Transformer,

Low Voltage:

- Power Distribution Panel, Main Feeder system.
- Secondary works for Production line/machines,
- Socket outlet system and Cable Tray and Trunking system

Lighting Fixtures:

- Lighting Fixtures System, External lighting system, High mass Lighting.

Power Back up and New Energy system:

- Back-up Generator, UPS system and Solar energy system.

Tele-communication system:

- Fire Alarm system, Access Control system, Telephone and Data, CCTV, MATV system, Public Address system and Master Clock system.

Automation & Instrumentation:

- Building Management Systems and Instrumentation system.

Lightning Protection and Grounding system

- Lightning Protection and Grounding system.



❖ Business Activities | Plumbing & Fire Protection



Water Supply system:

- Incoming Water supply, Pump Station and Water Supply pipe to end user.

Sewage Water system:

- Sewage Water from Toilet and others, Manhole and Submersible Pump.
- Grease Trap for Kitchen and Sewage Water for Kitchen and Canteen.
- Drainage water from equipment and other.

Water supply & wastewater treatment system:

- Water Supply Treatment, Waster Water Treatment, Module type for wastewater.

Fire Hydrant system:

- Fire Hydrant system, Fire Extinguisher (Normal and UL/FM Approval)

Fire Sprinkler system:

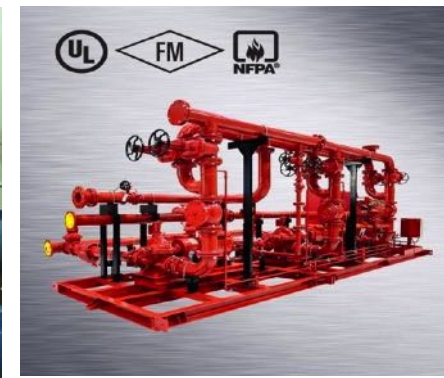
- Fire Sprinkler system (Wet, Dry and Deluge) (Normal and UL/FM Approval).

Special Fire Protection:

- FM 200 system, CO2 system, Foam system, Nitrogen system, Fire Protection for Kitchen, Stat X, Novec 1230...

Sanitary Fixture.

- Sanitary Ware and Accessories.



❖ Business Activities | HVAC works

Chiller, AHU, FCU and Air Conditioner System:

- Water Cooled and Air Cooled Chiller system.
- AHU and FCU system for all the building.
- VRF, Multi system and Air Conditioner system.

Clean Room:

- Clean Room Class: 1.000, 10.000 and 100.000 for all the building.
- Sandwich Panel, Doors and accessories for Clean Room
- Pass Box, Air Shower and Air Filter for Clean Room.

Ventilation system:

- Ventilation system for all the building.

Other Ventilation system:

- Local Ventilation for Machines, Working Space and Work Station.

Cold Storage and Refrigeration system:

- Cold Storage for all the building (Storage, Warehouse, Seafood...)
- Refrigeration system for Production Factory.

Automation & Instrumentation for HVAC system:

- Control and instrumentation for HVAC system.



❖ Business Activities | Utilities system



Air Compressor system:

- Oil Flood/Oil Free Air Compressor system.
- Desiccant Air Compressor system.

Industrial Gas system:

- LPG system and LPG piping.
- Nitrogen, Hydrogen and Oxygen system.
- Vacuum system, CO2 system, Argon system, NH3 system, Natural Gas....

Humidification system:

- Humidifier and Desiccants Dehumidifier system.

Dust Collector & Scrubber system:

- Dust Collector & Bag Filter system for all the building.
- Scrubber (Wet & Dry) system for all the building.

Steam Boiler & Heat Exchanger system:

- Steam Boiler for all the building.
- Heat Exchanger and Heat Recovery for the building.

Cooling Water & Chilled Water:

- Cooling Tower system and Chilled Water system.



❖ Business Activities | Erection machine & pipelines

Erection Production line:

- Erection Production line for Factories.

Erection equipment:

- Erection Heavy equipment.
- Erection Tank and Storage Tank Farm.
- Erection Conveyor and Transfer Tower.

Erection pipeline:

- Erection Pipeline for Factories and Station (Air & Water).



❖ Business Activities | Trading equipment & material



Supply Electrical equipment and Materials:

- Supply Electrical Panel (MV Switchgear and LV Distribution Panel).
- Supply Power and Control Cable.

Supply Home Automation system:

- Supply BMS system (Building Management System).
- Supply Smart Home system.
- Supply Pre-Fire Alarm for Building system.

Supply Mechanical equipment and Materials:

- Supply Air Conditioning Equipment.
- Supply Steel pipe & Valves.
- Supply Cooper pipe and Insulation
- Supply uPVC, PPR pipe and HDPE pipe.

Supply Raw Materials for Production line:

- Zinc Ingot and Cooper for Production line.



Home Automation



❖ Business Activities | Maintenance & Services

We ensure a comfortable environment with our reliable technology and quick response. The lifespan of building equipment such as air conditioners and water supply and drainage systems depends on the conditions in which the equipment is installed or used, and on the natural conditions. Not only does it cost more to repair after a failure, but also it shortens the life of the building. Our appropriate maintenance services help prevent a contingent failure and lengthen the buildings' lifespan, so you can use your equipment without any worry.

Our Maintenance Services is:

1. Air Conditioning and Ventilation
2. Plumbing Works
3. Air Compressor and Steam Boiler
4. Piping and Valves for Factory.
5. Fire Protection Works.
6. Electrical Substation, Generator and MainFeeder
7. Lighting Fixture and Socket Outlet
8. Telephone, LAN, CCTV, Access Control, Communication
9. Automation for Factory and Building.
10. Upgrade and Checking following Factory/Building schedules



Maintenance Contract

Plan A: Scheduled inspection contract

We carry out regular inspections annually and suggest a preventive maintenance service. Under this contract, you need to pay the cost of the call service (such as initial inspection fee, cost of replacement parts for equipment and replacement work)

Plan B: Maintenance and inspection contract

In addition to two scheduled inspections per year, this contract basically covers the cost of call service to address contingent failures (including initial inspection fee). You can choose maintenance items for individual equipment from our "maintenance list" according to your needs and budget.

**Does not cover the cost of replacement parts for equipment or the cost of replacement work.*

Plan C: Full-maintenance contract

Covers expenses incurred for call service and all repair costs in the case of contingent failure. You can put building management and cost management in place according to your plan.

❖ Business Activities | Investment



Investment Hot Dip Galvanizing Factory in Yangon:

Our Investment with local shareholder for Hot Dip Galvanizing with total investment cost is 10 million USD, capacity 60.000 ton/year and Biggest Kettle in Myanmar for Galvanizing

KHIN MAUNG NYUNT STEEL PRODUCTS AND GALVANIZING
HOT DIP GALVANIZING AND FABRICATION STEEL PRODUCTS
247-250 Myingun Dagar Industrial Zone, Hmawbi Township, Yangon Region, Myanmar
Tel: (+65) 9796173738, (+65) 9666668888
Email: phungphung@kmm.hdg.com, www.kmm-hdg.com, f: KMN Steel Products Galvanizing

OUR PRODUCT APPLICATIONS:






QUALITY COMPLIANCES:
- ISO 14681:2009 - Hot dip galvanized coatings on fabricated iron and steel articles - Specifications and test methods.
- ASTM A123/ A123 M: Standard Specification for Zinc (Hot-Dip Galvanized) Coatings on Iron and Steel Products.
Our Hot Dip Galvanizing quality control meet ISO 9001:2015 standard.
Our Factory is working to meet ISO14001: 2015 Environmental Management system and ISO 45001:2018 Health & Safety Management system

INFRASTRUCTURE AND HEAVY INDUSTRIAL

NEW TECHNOLOGY AND BIGGEST KETTLE IN MYANMAR FOR GALVANIZING:








Our Products are Value for Myanmar's Development - ကျွန်ုပ်တို့၏ထုတ်ကုန်များသည် မြန်မာနိုင်ငံရှိမြို့နယ်တစ်ခုချင်းစီတွင် တန်ဖိုးရှိစွာ ပံ့ပိုးပါသည်။

Investment Office and Warehouse in Yangon:

Our Investment Office and Warehouse Building in Thilawa SEZ, Yangon, Myanmar, In there Office is 800 m2 and Warehouse 1.100 m2 in total landing is 2.500 m2.



❖ Business Activities | Investment

Water Supply Treatment Plant (Module Type):

We are promotion Investment or Built – Operation – Transfer for Water Supply Treatment Project with Module Type, from 2007 we cooperate with SETFIL Company, they had supply and installation in a lot project in Vietnam.



Brackish Water and Sea Water Treatment (Module Type):

We are promotion Investment or Built – Operation – Transfer for Water Supply Treatment Project with Module Type, our technology and product can be fix for urban, city, island....all cities and town near sea in Vietnam.



❖ Business Activities | Investment



Wastewater Treatment Plant:

We are promotion Investment or Built – Operation – Transfer for Water Supply Treatment Project with Module Type, we cooperate with Nagakawa Chemical Company (Japan) supply and installation in a lot project in Vietnam and Myanmar.



Waste to Energy (Waste Treatment for Urban and City):

We are promotion Investment or Built – Operation – Transfer for Waste to Energy Project, we cooperate with Japanese Company supply and installation in a lot project in Japan and in the world.



❖ Health, Safety and Environmental (HSE).....

Our policy

Health, Safety and Environment are amongst TAMADA's top priorities. In 2014, both TAMADA Vietnam and TAMADA Myanmar we are got ISO 14001-2015 (Environment) and ISO 45001-2018 (Health & Safety) certification. From construction, installation, maintenance in buildings projects, remote and various industrial sites as well as power plants, our staffs are exposed everyday to hazards, chemicals, refrigerants and power sources.

In such challenging environments, TAMADA has developed a safety culture and policy with clear objectives: no accident & reduction of the number of injuries to an absolute minimum level.

Applications

TAMADA is committed to:

1. Provide and adopt in all divisions HSE work methods and conditions.
2. Inform all employees on potential hazards and the precautions to be adopted by providing information, instruction, training and supervision.
3. Identify the immediate and underlying causes of work and related injuries and implement any preventive necessary action.
4. Encourage employees actively to participate in health and safety arrangements and submit ideas and suggestions to improve standards.
5. Minimize our environmental impact for the benefit of all persons, employees and the business performance.
6. Minimize our use of resources, prevent pollution and minimize waste.
7. Recover and recycle in preference to disposal wherever practicable and economically viable.
8. Communicate this policy and the results of our activities to members of the division and other interested parties.

Projects and Department Managers are responsible and accountable for maintaining HSE standards in their work environments. They shall enforce them towards their employees, sub contractors and the public. This Policy will be reviewed and developed periodically to ensure it remains effective and necessary amendments shall be communicated to all employees.

In addition, TAMADA has developed a "Hearts & Minds" program that invites our staffs to take safety messages back to their home, family and neighbors.



❖ Quality Control and Quality Assurance.....



Our policy

TAMADA Board of Management recognizes that quality is a permanent objective. We consider quality as the key to not only a sustainable growth for our company, but also to the development of long-term beneficial relationships with our clients, personnel, subcontractors and other business partners.

Our company is committed to implementing and maintaining a Quality Management System using the appropriate ISO 9001-2015 standard. We are got certification ISO 9001-2015 in 2020.

Applications

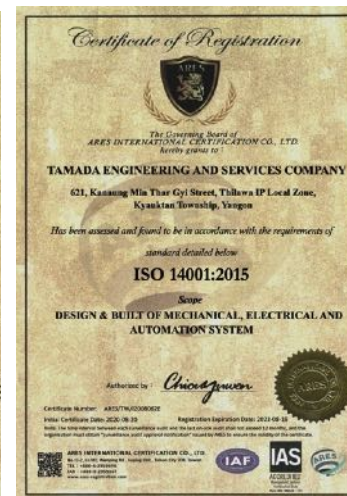
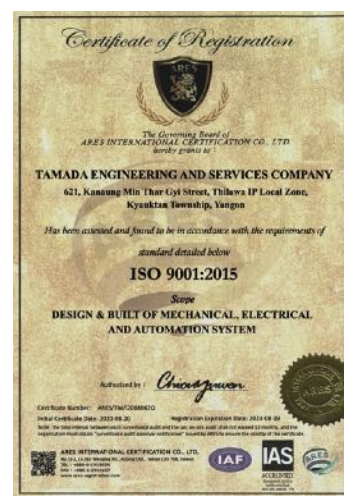
Our Quality Management System relies on the following policy:

Establish and implement project specific quality plans to reflect customers' needs and expectations and achieve them – with a particular emphasis on delivery time. Identify the required skills and resources to achieve desired levels of service to our clients and provide them.

Ensure that employees are aware of the requirements and agreed standards on their work and that they constantly meet these. Ensure employees are competent for the works and provide appropriate training when required. Extend awareness of the quality requirements of the projects to subcontractors and suppliers and ensure that they meet them. Promote a spirit of working within "the rules of Art" and target reduction of remedial and corrective works – Doing things "Right First Time".

Ensure, by fostering a spirit of teamwork and open communication that employees understand that they have an influence and are in charge of the application of the system, that they assume ownership for its improvement and regularly contribute to it.

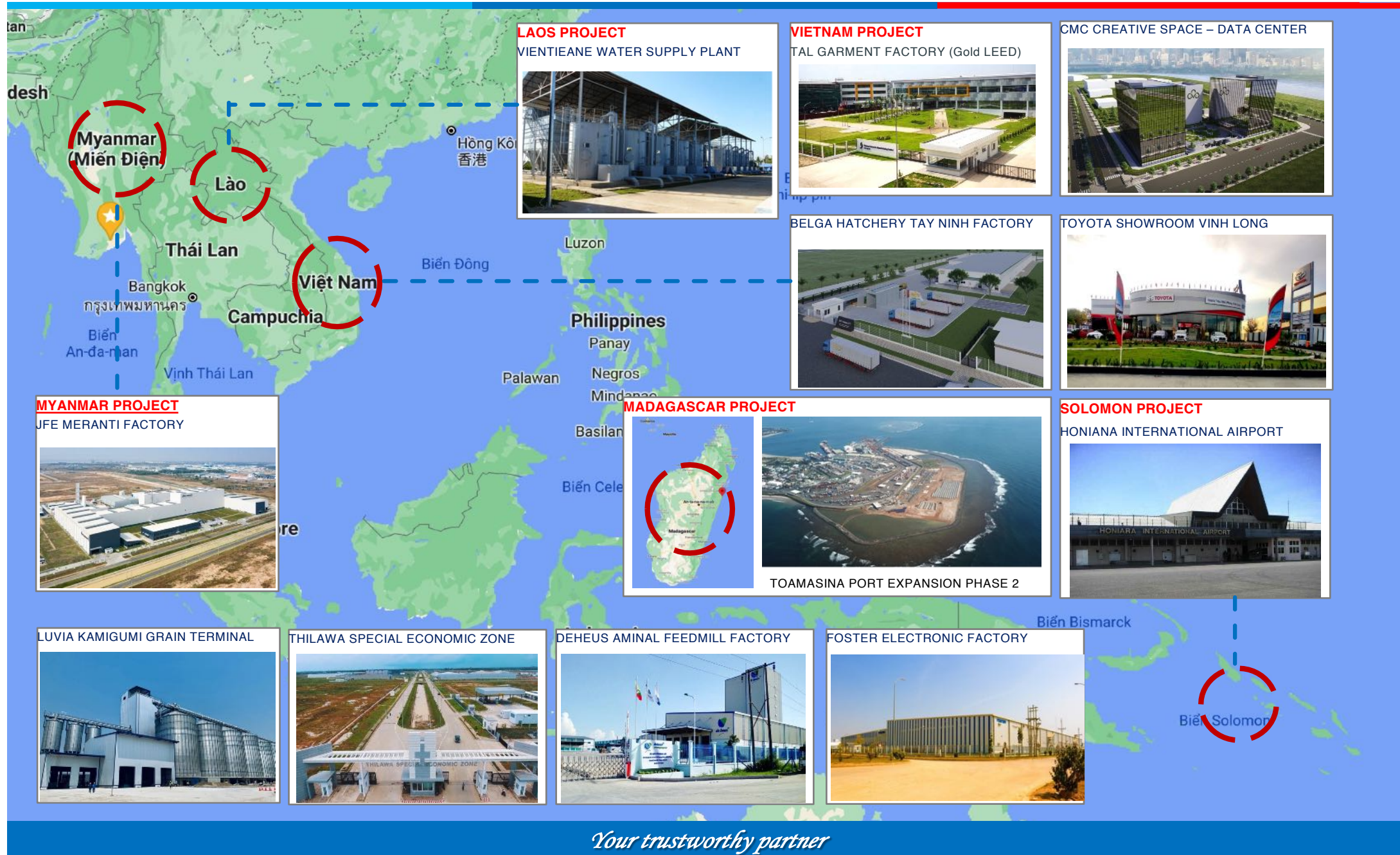
Monitor the performance of our system, the quality of our service, and the satisfaction of our customers and aim for continual improvement. The implementation of our QMS is tracked through internal audit, management review and monthly monitoring of the quality objectives.



Your trustworthy partner

REFERENCE PROJECT MAP

FOR MECHANICAL AND ELECTRICAL WORKS



❖ Project Reference List – Danh mục các dự án thực hiện



No	Project name	Schedule	Customer
ELECTRONICS DEVICES FACTORY (Clean Room & Assembly)			
1	FOSTER (THILAWA) ELECTRIC FACTORY (Phase 1, 2) <ul style="list-style-type: none"> Location: Thilawa SEZ, Yangon City, Myanmar. Type: Clean Room Class 100.000 	2015, 2017	PENTA OCEAN CONSTRUCTION (Japan)
2	NISSEI ELECTRONICS FACTORY (Phase 4) <ul style="list-style-type: none"> Location: Linh Trung Sepzone, Thu Duc District, Ho Chi Minh, Vietnam Type: Clean Room Class 100.000 	2019	HAZAMA CORPORATION (Japan)
PLASTIC FACTORY			
1	HIEP PHUOC THANH FACTORY – PTE <ul style="list-style-type: none"> Location: Hiep Phuoc IP, Hiep Phurc Province, Ho Chi Minh City Type: Plastic Factory 	2020-2021	NHA VIET CONSTRUCTION (Viet Nam)
AUTOMOTIVE FACTORY			
1	KOYORAD MYANMAR FACTORY (P.1) <ul style="list-style-type: none"> Location: Thilawa SEZ, Yangon City, Myanmar. Type: Radiator Manufacturer 	2015	PENTA OCEAN CONSTRUCTION (Japan)
2	MYARNAK MYANMAR FACTORY (P.1) <ul style="list-style-type: none"> Location: Thilawa SEZ, Yangon City, Myanmar. Type: Automotive Part 	2015	PENTA OCEAN CONSTRUCTION (Japan)
3	KUBOTA MYANMAR FACTORY <ul style="list-style-type: none"> Location: Thilawa SEZ, Yangon City, Myanmar Type: Agrimotor 	2016	PENTA OCEAN CONSTRUCTION (Japan)
4	MYARNAK MYANMAR FACTORY (P.2) <ul style="list-style-type: none"> Location: Thilawa SEZ, Yangon City, Myanmar. Type: Automotive Part 	2017	PENTA OCEAN CONSTRUCTION (Japan)

No	Project name	Schedule	Customer
5	KOYORAD MYANMAR FACTORY (P.2) <ul style="list-style-type: none"> Location: Thilawa SEZ, Yangon City, Myanmar. Type: Radiator Manufacturer 	2019	PENTA OCEAN CONSTRUCTION (Japan)
6	SEWS MYANMAR FACTORY <ul style="list-style-type: none"> Location: Thilawa SEZ, Yangon City, Myanmar. Type: Wiring Manufacturer 	2020-2021	PENTA OCEAN CONSTRUCTION (Japan)
HATCHERY FACTORY			
1	BELGA HATCHERY TAY NINH FACTORY <ul style="list-style-type: none"> Location: Long Duc IP, Long Thanh, Dong Nai. Type: Hatchery Factory. 	2020-2021	KANSAIVINA CONSTRUCTION (Viet Nam)
STEEL FABRICATION & GALVANIZING FACTORY			
1	NEOSYS VIETNAM FACTORY <ul style="list-style-type: none"> Location: Long Duc IP, Long Thanh, Dong Nai. Type: Kitchen equipment. 	2014	DAIWA HOUSE CORPORATION (Japan)
2	KMN HOT DIP GALVANIZING FACTORY <ul style="list-style-type: none"> Location: Myaung Dagar IP, Hnawbi Township, Yangon City, Myanmar Type: Steel Product & Hot Dip Galvanizing 	2018	KMN STEEL PRODUCT & GALVANIZING COMPANY (Taiwan & Vietnam)
EMULSION ROAD FACTORY			
1	SEIKI TOKYU FACTORY <ul style="list-style-type: none"> Location: Thilawa SEZ (Zone A), Yangon City, Myanmar. Type: Steel Product 	2019	GOLDEN TOKYU CORPORATION (Japan)

◆ Project Reference List – Danh mục các dự án thực hiện



No	Project name	Schedule	Customer
GARMENT & TEXTILE FACTORY			
1	TAL GARMENT FACTORY <ul style="list-style-type: none"> Location: Binh Xuyen II IP, Vinh Phuc, Vietnam. Type: (Gold LEED Certificate – Green Building) 	2015 – 2016	SHIMIZU CORPORATION (Japan)
2	YYK NHON TRACH FACTORY - PHASE 2 <ul style="list-style-type: none"> Location: Nhon Trach III IP, Long Thanh District, Dong Nai, Vietnam. Type: Garment Manufacturing 	2018-2019	HAZAMA CORPORATION
SUPERMARKET AND COMMERCIAL BUILDING			
1	SUPER HOTEL PROJECT <ul style="list-style-type: none"> Location: Thilawa SEZ, Yangon City, Myanmar Type: Hotel. 	2017 – 2018	PENTA OCEAN CONSTRUCTION (Japan)
RENTAL EQUIPMENT FACTORY			
1	AKTIO MYANMAR FACTORY <ul style="list-style-type: none"> Location: Thilawa SEZ, Yangon City, Myanmar. Type: Rental Equipment 	2017	PENTA OCEAN CONSTRUCTION (Japan)
CAMERA AND MEDICAL EQUIPMENT FACTORY			
1	FUJIFILM MYANMAR FACTORY <ul style="list-style-type: none"> Location: Thilawa SEZ, Yangon City, Myanmar. Type: Camera & Medical Equipment 	2016-2017	PENTA OCEAN CONSTRUCTION (Japan)
FEEDMILL FACTORY			
1	DEHEUS AMINAL FEED MILL FACTORY <ul style="list-style-type: none"> Location: Myaung Dagar IP, Hnawbi, Yangon City, Myanmar. Type: Amino Acid Feed Mill Factory 	2016	DEHEUS MYANMAR COMPANY (Netherlands)

No	Project name	Schedule	Customer
WAREHOUSE AND LOGISTIC FACTORY			
3	THILAWA RENTAL A FACTORY <ul style="list-style-type: none"> Location: Thilawa SEZ, Yangon City, Myanmar. Type: General Warehouse. 	2015	PENTA OCEAN CONSTRUCTION (Japan)
4	THILAWA RENTAL B FACTORY <ul style="list-style-type: none"> Location: Thilawa SEZ, Yangon City, Myanmar. Type: General Warehouse. 	2016	PENTA OCEAN CONSTRUCTION (Japan)
5	FUJITRANS LOGISTIC WAREHOUSE <ul style="list-style-type: none"> Location: Thilawa SEZ, Yangon City, Myanmar. Type: General Warehouse 	2017	FUJITA CORPORATION (Japan)
6	YUSEN LOGISTIC WAREHOUSE <ul style="list-style-type: none"> Location: Thilawa SEZ, Yangon City, Myanmar. Type: Cold Storage & General 	2017	PENTA OCEAN CONSTRUCTION (Japan)
STEEL FACTORY			
1	RK STEEL MYANMAR FACTORY <ul style="list-style-type: none"> Location: Thilawa SEZ, Yangon City, Myanmar. Type: Coil Center (Cut sheet) 	2015	PENTA OCEAN CONSTRUCTION (Japan)
2	JFE MERANTI STEEL FACTORY <ul style="list-style-type: none"> Location: Thilawa SEZ, Yangon City, Myanmar. Type: Color Coated & Rolling Mill 	2017- 2018	PENTA OCEAN CONSTRUCTION (Japan)
CERAMIC TILE FACTORY			
1	RITAVO TILE FACTORY <ul style="list-style-type: none"> Location: Hiep Phuoc IP, Hiep Phuoc Province, Ho Chi Minh City. Type: Ceramic Tile 	2021 - Ongoing	NHA VIET CONSTRUCTION (Viet Nam)

❖ Project Reference List – Danh mục các dự án thực hiện



No	Project name	Schedule	Customer
INDUSTRIAL GAS FACTORY			
1	TAIYO NIPPON SANSO FACTORY <ul style="list-style-type: none"> Location: Thilawa SEZ, Yangon City, Myanmar. Type: Industrial Gas. 	2017	TAIYO NIPPON SANSO MYANMAR (Japan)
2	VIJAGAS PHU MY 3 FACTORY <ul style="list-style-type: none"> Location: Phu My 3 IP, Tan Thanh, Ba Ria – Vung Tau, Vietnam Type: Industrial Gas. 	2018	TAIYO NIPPON SANSO (Japan)
INFACSTRUCTURE PROJECT			
1	VIENTIANE INTERNATIONAL AIRPORT <ul style="list-style-type: none"> Location: Vientiane City, Laos PRD Type: Airport 	2017-2018	ANDO HAZAMA CORPORATION (Japan)
2	WILMAR MYANMAR PORT TERMINAL <ul style="list-style-type: none"> Location: Thilawa SEZ, Thanlyin Township, Yangon City, Myanmar Type: Terminal Port 	2017-2018	PENTA OCEAN CONSTRUCTION (Japan)
3	LUVIA-KAMIGUMI GRAIN TERMINAL <ul style="list-style-type: none"> Location: Thilawa SEZ, Yangon City, Myanmar Type: Grain Terminal Port 	2017 – 2018	PENTA OCEAN CONSTRUCTION (Japan)
4	THILAWA SEZ (ZONE B EXTENTION) <ul style="list-style-type: none"> Location: Thilawa SEZ, Yangon City, Myanmar Type: Industrial Park 	2018 – 2019	PENTA OCEAN CONSTRUCTION (Japan)
5	HONIARA INNTERNATIONAL AIRPORT <ul style="list-style-type: none"> Locationn: Honiara Capital, Solomon Type: Airport 	On going	KITANO CONSTRUCTION (Japan)

No	Project name	Schedule	Customer
STATIONARY FACTORY			
1	TOMBOW VIETNAM FACTORY. <ul style="list-style-type: none"> Location: Lot 14, Tan Thuan SEZ, Ho Chi Minh, Vietnam Type: Stationary 	2016-2017	SHIMIZU CORPORATION (Japan)
FOOD AND DRINKING FACTORY			
1	SETHIA RICE OIL DONG THAP FACTORY <ul style="list-style-type: none"> Location: Lot I-6, I-7, I-8, Sa Dec IZ, Tan Khanh Dong Comminue, Sa Dec City, Dong Thap Province Type: Food Factory. 	2019-2020	NHA VIET CONSTRUCTION (Viet Nam)
2	YUKIOH THILAWA FACTORY <ul style="list-style-type: none"> Location: Thilawa Zone B, Thilawa SEZ, Thanlyin Township, Yangon Type: Drinking Factory. 	2019-2020	PENTA OCEAN CONSTRUCTION (Japan)
THERMAL EQUIPMENT FACTORY			
1	RHEEM VIETNAM FACTORY. <ul style="list-style-type: none"> Location: Lot C6, Dong An Industrial Park 2, Binh Duong Province, Vietnam Type: Thermal Equipment 	On going	CET CONSTRUCTION (Vietnam)
COMMERCIAL BUILDING			
1	SCHNEIDER OFFICE <ul style="list-style-type: none"> Location: Time City Building, ward 7, Kamayut Township, Yangon City Type: Office Building 	2020	SCHNEIDER MYANMAR (France)
2	TOYOTA SHOWROOM <ul style="list-style-type: none"> Location: Vinh Long City, Vinh Long Province, Vietnam Type: Showroom 	2020	TOYOTA Vietnam (Viet Nam)
3	CMC DATA CENTER BUILDING <ul style="list-style-type: none"> Location: Tan Thuan Industrial Zone, District 7, Ho Chi Minh City, Vietnam Type: Data Center Building 	On going	KINDEN VIETNAM (Japan)

Grain Terminal Port Reference Projects



LUVIA – KAMIGUMI GRAIN TERMINAL PORT

Main Contractor: **PENTA OCEAN CONSTRUCTION Co. Ltd** (Japan)

Location: Thilawa SEZ, Yangon City, Myanmar

WILMAR MYANMAR GRAIN TERMINAL PORT

Main Contractor: **PENTA OCEAN CONSTRUCTION Co. Ltd** (Japan)

Location: Thilawa SEZ, Yangon City, Myanmar



Food and Drinking Reference Projects



SETHIA RICE OIL DONG THAP FACTORY

Main Contractor: **NHAVIET CONSTRUCTION COMPANY** (Vietnam)

Location: Sa Dec IZ, Tan Khanh Dong Cominue, Sa Dec City, Dong Thap Province

YUKIOH MYANMAR FACTORY

Main Contractor: **PENTA OCEAN CONSTRUCTION Co. Ltd** (Japan)

Location: Thilawa SEZ, Yangon City, Myanmar



Infrastructure Reference Projects



TOAMASINA EXPANSION PORT DEVELOPMENT (Japan's ODA Project)

Main Contractor: **PENTA OCEAN CONSTRUCTION Co. Ltd** (Japan)

Location: Toamasina City, Tamatave Province, Madagascar



THILAWA SPECIAL ECONOMIC ZONE

Main Contractor: **PENTA OCEAN CONSTRUCTION Co. Ltd** (Japan)

Location: Thilawa SEZ, Thanlyin Township, Yangon City, Myanmar



International Airport Reference Projects



VIENTIANE INTERNATIONAL AIRPORT (Japan's ODA Project)

Main Contractor: **HAZAMA ANDO CORPORATION** (Japan)

Location: Vientiane City, Laos PDR



HONIARA INTERNATIONAL AIRPORT (Japan's ODA Project)

Main Contractor: **KITANO CONSTRUCTION CORPORATION** (Japan)

Location: Honiara City, Solomon Island



Automobile Industrial Factory Reference Projects



MYNARNAK THILAWA FACTORY

Main Contractor: **PENTA OCEAN CONSTRUCTION Co. Ltd** (Japan)
Location: Zone A, Thilawa SEZ, Yangon City, Myanmar



KOYORAD THILAWA FACTORY

Main Contractor: **PENTA OCEAN CONSTRUCTION Co. Ltd** (Japan)
Location: Zone A, Thilawa SEZ, Yangon City, Myanmar



KUBOTA THILAWA FACTORY

Main Contractor: **PENTA OCEAN CONSTRUCTION Co. Ltd** (Japan)
Location: Zone A, Thilawa SEZ, Yangon City, Myanmar



SEWS COMPONENT THILAWA FACTORY

Main Contractor: **PENTA OCEAN CONSTRUCTION Co. Ltd** (Japan)
Location: Zone A, Thilawa SEZ, Yangon City, Myanmar



Steel Manufacturing Factory Reference Projects



JFE MERANTI STEEL MANUFACTURING FACTORY

Main Contractor: **PENTA OCEAN CONSTRUCTION Co. Ltd** (Japan)

Location: Zone A, Thilawa SEZ, Yangon, Myanmar



RK STEEL YANGON FACTORY – PHASE 1, 2

Main Contractor: **PENTA OCEAN CONSTRUCTION Co. Ltd** (Japan)

Location: Zone A, Thilawa SEZ, Yangon, Myanmar



Industrial Gas Factory Reference Projects



TAIYO NIPPON SANISO FACTORY

Main Contractor: **HAZAMA ANDO CORPORATION** (Japan)

Location: Zone A, Thilawa SEZ, Yangon, Myanmar



VIJAGAS PHUMY 3 IP GAS STATION

Main Contractor: **VIJAGAS VIETNAM Co. Ltd** (Japan)

Location: Phu My Industrial Park 3, Phu My Town, Ba Ria – Vung Tau Province



Electronics Factory Reference Projects



FOSTER ELECTRONICS (THILAWA) FACTORY – PHASE 1, 2

Main Contractor: **PENTA OCEAN CONSTRUCTION Co. Ltd** (Japan)

Location: Lot B3, Zone A, Thilawa SEZ, Yangon, Myanmar



NISSEI ELECTRONICS VIETNAM FACTORY – PHASE 4

Main Contractor: **HAZAMA ANDO VIETNAM Co. Ltd** (Japan)

Location: Linh Trung SEZ, Thu Duc City, Ho Chi Minh City, Vietnam



Garment and Textile Reference Projects



TAL GARMENT VIETNAM FACTORY – PHASE 1 (Gold LEED)

Main Contractor: **SHIMIZU VIETNAM Co. Ltd** (Japan)

Location: Ba Thien 2 IZ, Binh Xuyen District, Vinh Phuc Province, Vietnam



YKK NHON TRACH FACTORY – PHASE 3

Main Contractor: **HAZAMA ANDO VIETNAM Co. Ltd** (Japan)

Location: Nhon Trach IZ, Nhon Trach District, Dong Nai Province, Vietnam



Warehouse and Logistic Reference Projects



YUSEN LOGISTIC WAREHOUSE (THILAWA)

Main Contractor: **PENTA OCEAN CONSTRUCTION Co. Ltd** (Japan)
Location: Lot C6, Zone A, Thilawa SEZ, Yangon City, Myanmar



FUJITRANS LOGISTICS MYANMAR

Main Contractor: **FUJITA CORPORATION Co. Ltd** (Japan)
Location: Zone A Thilawa SEZ, Thanlyin Township, Yangon City, Myanmar



Rental Factory Reference Projects



RENTAL A FACTORY (THILAWA)

Main Contractor: **PENTA OCEAN CONSTRUCTION Co. Ltd** (Japan)
Location: Zone A, Thilawa SEZ, Yangon City, Myanmar



RENTAL B FACTORY (THILAWA)

Main Contractor: **PENTA OCEAN CONSTRUCTION Co. Ltd** (Japan)
Location: Zone A, Thilawa SEZ, Yangon City, Myanmar



Commercial Building Reference Projects



SCHNEIDER MYANMAR OFFICE SPACE

Main Contractor: **SCHNEIDER MYANMAR Co. Ltd** (France)
Location: Times City, Kamayut Township, Yangon City, Myanmar



CMC CREATIVE SPACE BUILDING - DATA CENTER

Main Contractor: **KINDEN VIETNAM Co. Ltd** (Japan)
Location: Tan Thuan SEZ, District 7, Ho Chi Minh City, Vietnam



Residential and Hotel Reference Projects



STAR VILLAS RESIDENTIAL THILAWA

Main Contractor: **THANLYIN ESTATE DEVELOPMENT Co. Ltd** (Malaysia)
Location: Star City, Thanlyin Township, Yangon City, Myanmar



SUPER HOTEL THILAWA

Main Contractor: **PENTA OCEAN CONSTRUCTION Co. Ltd** (Japan)
Location: Zone A, Thilawa SEZ, Yangon City, Myanmar



Feed Mill Factory Reference Projects



DEHEUS MYANMAR FACTORY

Main Contractor: **ANTACO MYANMAR Co. Ltd** (Vietnam)
Location: Myaung Dagar IZ, Hmawbi Township, Yangon City, Myanmar

Medical equipment Factory Reference Projects



FUJIFILM THILAWA FACTORY

Main Contractor: **PENTA OCEAN CONSTRUCTION Co. Ltd** (Japan)
Location: Zone A, Thilawa SEZ, Yangon City, Myanmar

Hatchery Factory Reference Projects



BELGA HATCHERY TAYNINH FACTORY

Main Contractor: **KANSAI VINA Co. Ltd** (Vietnam)
Location: Thanh Thanh Cong IZ, Trang Bang Disitric, Tay Ninh Province



Road Emulsion Factory Reference Projects



SEIKITOKYU EMULSION ROAD FACTORY

Main Contractor: **GOLDEN TOKYU CONSTRUCTION Co. Ltd** (Japan)
Location: Zone A, Thilawa SEZ, Yangon City, Myanmar



Rental Equipment Factory Reference Projects



AKTIO MYANMAR FACTORY

Main Contractor: **PENTA OCEAN CONSTRUCTION Co. Ltd (Japan)**
Location: Zone A, Thilawa SEZ, Yangon City, Myanmar

Hotdip Galvanized Factory Reference Projects



KMN STEEL PRODUCT & GALVANIZING FACTORY

The Owner: **KMN STEEL PRODUCT & GALVANIZING Co. Ltd**
Location: Myaung Dagar IZ, Hmawbi Township, Yangon City, Myanmar



Nutriline Factory Reference Projects



AMWAY NUTRITION BINH DUONG FACTORY

Main Contractor: **TVC VIETNAM CORPORATION (Japan)**
Location: VSIP II-A, Ben Cat District, Binh Duong Province, Vietnam

Plastic Packaging Factory Reference Projects



DAITHANH PLASTIC PACKAGING FACTORY

Main Contractor: **NHAVIET CONSTRUCTION Co. Ltd (Vietnam)**
Location: Long Hau IZ, Can Giuoc District, Long An Province



Stationary Factory Reference Projects



TOMBOW STATIONARY FACTORY

Main Contractor: **SHIMIZU VIETNAM CORPORATION** (Japan)
Location: Tan Thuan SEZ, District 7, Ho Chi Minh City, Vietnam

Thermal equipment Factory Reference Projects



RHEEM THERMAL VIETNAM FACTORY

Main Contractor: **CET CONSTRUCTION & TRADING Co. Ltd** (Vietnam)
Location: Dong An 2 IZ, Thuan An District, Binh Duong Province, Vietnam

Showroom Reference Projects



TOYOTA VINH LONG SHOWROOM

Main Contractor: **RAPID VIETNAM Co. Ltd** (Singapore)
Location: Vinh Long City, Vinh Long Province, Vietnam



Tilte Ceramic Factory Reference Projects



RITAVO TITLE CERAMIC & PACKAGING FACTORY

Main Contractor: **NHAVIET CONSTRUCTION Co. Ltd** (Vietnam)
Location: Hiep Phuoc IZ, Nha Be District, Ho Chi Minh City, Vietnam

